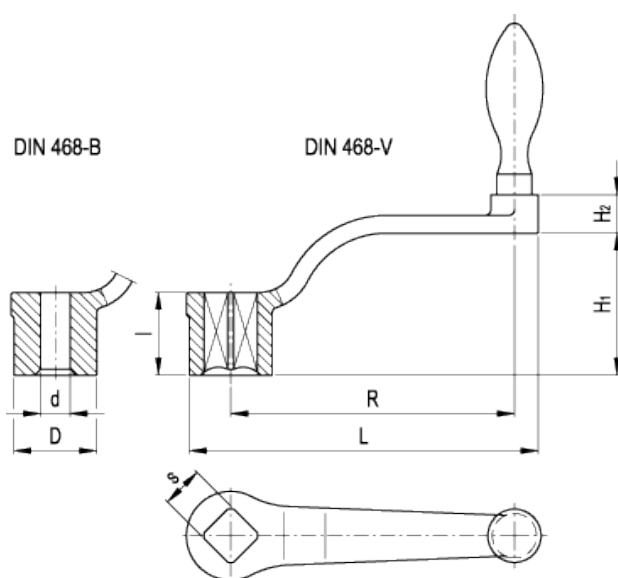


DIN 468

Crank handles



american unit
metric unit

Elesa-Gantergriff		Main dimensions	Mounting hole			Handle	Weight						
Handle D	Handle F		d _{H7}	s _{H11}	l		∅	Handle D	Handle F				
Code	Description	R	L	D	H ₁	H ₂	d _{H7}	s _{H11}	l	∅	lbs g	lbs g	
GN.11238	GN.11237	DIN 468-80-B8-*	3.15 80	4.02 102	0.94 24	1.5 38	0.51 13	0.31 8	- -	0.94 24	0.71 18	0.456 207	0.43 195
GN.11232	GN.11231	DIN 468-80-V10-*	3.15 80	4.02 102	0.94 24	1.5 38	0.51 13	-	0.39x0.39 10x10	0.94 24	0.71 18	0.43 195	0.403 183
GN.11234	GN.11233	DIN 468-80-V12-*	3.15 80	4.02 102	0.94 24	1.5 38	0.51 13	-	0.47x0.47 12x12	0.94 24	0.71 18	0.407 185	0.381 173
GN.11248	GN.11247	DIN 468-100-B10-*	3.94 100	4.88 124	1.1 28	1.89 48	0.51 13	0.39 10	- -	1.1 28	0.79 20	0.676 307	0.645 293
GN.11242	GN.11241	DIN 468-100-V12-*	3.94 100	4.88 124	1.1 28	1.89 48	0.51 13	-	0.47x0.47 12x12	1.1 28	0.79 20	0.65 295	0.619 281
GN.11244	GN.11243	DIN 468-100-V14-*	3.94 100	4.88 124	1.1 28	1.89 48	0.51 13	-	0.55x0.55 14x14	1.1 28	0.79 20	0.621 282	0.59 268

Elesa-Gantergriff			Main dimensions					Mounting hole			Handle	Weight	
Handle D	Handle F											Handle D	Handle F
Code		Description	R	L	D	H ₁	H ₂	d _{H7}	s _{H11}	l	∅	lbs g	lbs g
GN.11258	GN.11257	DIN 468-125-B10-*	4.92 125	6.06 154	1.34 34	2.17 55	0.55 14	0.39 10	- -	1.34 34	0.87 22	1.051 477	1.02 463
GN.11252	GN.11251	DIN 468-125-V14-*	4.92 125	6.06 154	1.34 34	2.17 55	0.55 14	- -	0.55x0.55 14x14	1.34 34	0.87 22	0.987 448	0.956 434
GN.11254	GN.11253	DIN 468-125-V17-*	4.92 125	6.06 154	1.34 34	2.17 55	0.55 14	- -	0.67x0.67 17x17	1.34 34	0.87 22	0.941 427	0.91 413
GN.11268	GN.11267	DIN 468-160-B14-*	6.3 160	7.56 192	1.5 38	2.56 65	0.55 14	0.55 14	- -	1.5 38	0.98 25	1.557 707	1.535 697
GN.11262	GN.11261	DIN 468-160-V17-*	6.3 160	7.56 192	1.5 38	2.56 65	0.55 14	- -	0.67x0.67 17x17	1.5 38	0.98 25	1.463 664	1.432 650
GN.11264	GN.11263	DIN 468-160-V19-*	6.3 160	7.56 192	1.5 38	2.56 65	0.55 14	- -	0.75x0.75 19x19	1.5 38	0.98 25	1.416 643	1.394 633
GN.11278	GN.11277	DIN 468-200-B17-*	7.87 200	9.37 238	1.73 44	3.07 78	0.83 21	0.67 17	- -	1.73 44	1.1 28	2.348 1066	2.297 1043
GN.11272	GN.11271	DIN 468-200-V19-*	7.87 200	9.37 238	1.73 44	3.07 78	0.83 21	- -	0.75x0.75 19x19	1.73 44	1.1 28	2.251 1022	2.2 999
GN.11274	GN.11273	DIN 468-200-V22-*	7.87 200	9.37 238	1.73 44	3.07 78	0.83 21	- -	0.87x0.87 22x22	1.73 44	1.1 28	2.126 965	2.075 942
GN.11288	GN.11287	DIN 468-250-B17-*	9.84 250	11.42 290	1.89 48	3.54 90	0.83 21	0.67 17	- -	1.89 48	1.26 32	3.359 1525	3.341 1517
GN.11282	GN.11281	DIN 468-250-V22-*	9.84 250	11.42 290	1.89 48	3.54 90	0.83 21	- -	0.87x0.87 22x22	1.89 48	1.26 32	3.161 1435	3.143 1427
GN.11284	GN.11283	DIN 468-250-V24-*	9.84 250	11.42 290	1.89 48	3.54 90	0.83 21	- -	0.94x0.94 24x24	1.89 48	1.26 32	3.044 1382	3.026 1374

* Complete the description of the standard item needed by adding the type of handle D or F listed in the code column.

Material

Nodular deburred cast iron, sandblasted matte finish.

Assembly

- Execution B: hub with H7 reamed through hole.
- Execution V: hub with H11 squared through hole.

Handle

- Type D: turned and mirror-polished steel revolving handle type [DIN 98](#).
- Type F: turned and mirror-polished steel fixed handle type [DIN 39](#).



STANDARD MACHINE ELEMENTS WORLDWIDE

ELESA-GANTER models all rights reserved in accordance with the law. Always mention the source when reproducing our drawings.