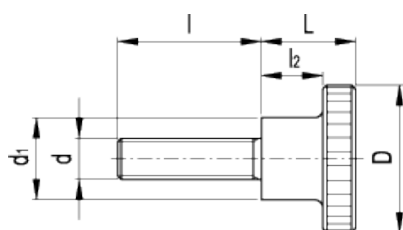


DIN 464

Knurled grip knobs with threaded pin



american unit
metric unit

Elesa-Gantergriff		Main dimensions				Threaded pin		Weight
Code	Description	D	L	d ₁	l ₂	d	l	lbs g
GN.29705	DIN 464-M4-5	0.63 16	0.37 9.5	0.31 8	0.24 6	- M4	0.2 5	0.022 10
GN.29707	DIN 464-M4-10	0.63 16	0.37 9.5	0.31 8	0.24 6	- M4	0.39 10	0.02 9
GN.29709	DIN 464-M4-16	0.63 16	0.37 9.5	0.31 8	0.24 6	- M4	0.63 16	0.02 9
GN.29715	DIN 464-M5-10	0.79 20	0.45 11.5	0.39 10	0.3 7.5	- M5	0.39 10	0.02 9
GN.29717	DIN 464-M5-16	0.79 20	0.45 11.5	0.39 10	0.3 7.5	- M5	0.63 16	0.035 16
GN.29719	DIN 464-M5-25	0.79 20	0.45 11.5	0.39 10	0.3 7.5	- M5	0.98 25	0.037 17
GN.29725	DIN 464-M6-10	0.94 24	0.59 15	0.47 12	0.39 10	- M6	0.39 10	0.062 28
GN.29727	DIN 464-M6-16	0.94 24	0.59 15	0.47 12	0.39 10	- M6	0.63 16	0.064 29
GN.29729	DIN 464-M6-25	0.94 24	0.59 15	0.47 12	0.39 10	- M6	0.98 25	0.068 31
GN.29731	DIN 464-M6-35	0.94 24	0.59 15	0.47 12	0.39 10	- M6	1.38 35	0.068 31
GN.29735	DIN 464-M8-16	1.18 30	0.71 18	0.63 16	0.47 12	- M8	0.63 16	0.123 56
GN.29737	DIN 464-M8-25	1.18 30	0.71 18	0.63 16	0.47 12	- M8	0.98 25	0.126 57

Elesa-Gantergriff		Main dimensions				Threaded pin		Weight
Code	Description	D	L	d ₁	l ₂	d	l	lbs g
GN.29741	DIN 464-M8-40	1.18 30	0.71 18	0.63 16	0.47 12	- M8	1.57 40	0.139 63
GN.29745	DIN 464-M10-20	1.42 36	0.91 23	0.79 20	0.59 15	- M10	0.79 20	0.238 108
GN.29747	DIN 464-M10-30	1.42 36	0.91 23	0.79 20	0.59 15	- M10	1.18 30	0.249 113
GN.29749	DIN 464-M10-40	1.42 36	0.91 23	0.79 20	0.59 15	- M10	1.57 40	0.256 116

Material

Turned black-oxide steel.

Assembly

Threaded pin.



STANDARD MACHINE ELEMENTS WORLDWIDE