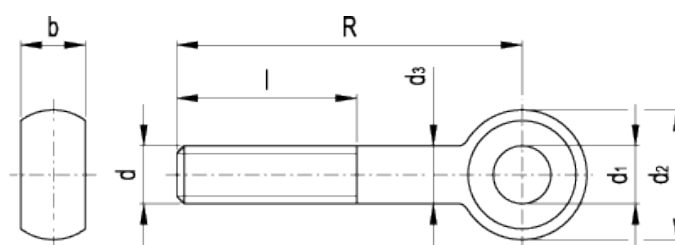


DIN 444-NI

Eye screws



american unit
metric unit

Elesa-Gantergriff		Main dimensions						Hole	Weight
Code	Description	d	R	b _{-0.06}	d _{2-0.12}	d ₃	l	d _{1 H7}	lbs g
GN.12503	DIN 444-M6-50-NI	- M6	1.97 50	0.28 7	0.55 14	0.24 6	1.26 32	0.236 6	0.031 14
GN.12505	DIN 444-M6-75-NI	- M6	2.95 75	0.28 7	0.55 14	0.24 6	1.26 32	0.236 6	0.044 20
GN.12513	DIN 444-M8-50-NI	- M8	1.97 50	0.35 9	0.71 18	0.31 8	1.26 32	0.315 8	0.057 26
GN.12515	DIN 444-M8-75-NI	- M8	2.95 75	0.35 9	0.71 18	0.31 8	1.26 32	0.315 8	0.079 36
GN.12523	DIN 444-M10-50-NI	- M10	1.97 50	0.47 12	0.79 20	0.39 10	1.57 40	0.394 10	0.084 38
GN.12525	DIN 444-M10-75-NI	- M10	2.95 75	0.47 12	0.79 20	0.39 10	1.57 40	0.394 10	0.115 52
GN.12527	DIN 444-M10-100-NI	- M10	3.94 100	0.47 12	0.79 20	0.39 10	1.57 40	0.394 10	0.15 68
GN.12533	DIN 444-M12-75-NI	- M12	2.95 75	0.55 14	0.98 25	0.47 12	1.57 40	0.472 12	0.176 80
GN.12535	DIN 444-M12-100-NI	- M12	3.94 100	0.55 14	0.98 25	0.47 12	1.57 40	0.472 12	0.216 98
GN.12537	DIN 444-M12-130-NI	- M12	5.12 130	0.55 14	0.98 25	0.47 12	1.57 40	0.472 12	0.264 120
GN.12543	DIN 444-M16-75-NI	- M16	2.95 75	0.67 17	1.26 32	0.63 16	1.97 50	0.63 16	0.322 146
GN.12545	DIN 444-M16-100-NI	- M16	3.94 100	0.67 17	1.26 32	0.63 16	1.97 50	0.63 16	0.403 183

Elesa-Gantergriff		Main dimensions						Hole	Weight
Code	Description	d	R	b ₋₀₀₆	d ₂ ₋₀₁₂	d ₃	l	d ₁ H7	lbs g
GN.12547	DIN 444-M16-130-NI	- M16	5.12 130	0.67 17	1.26 32	0.63 16	1.97 50	0.63 16	0.485 220

Material

AISI 303 stainless steel, sandblasted matte finish.

Special executions on request (For sufficient quantities)

Different threadings and lengths.

Features and applications

DIN 444-NI eye screws are used mainly for assembly equipment and connections.

AISI 303 stainless steel, thanks to its high resistance to corrosion, allows the application of these eye screws on machines and equipment in those sectors where laws or particular hygienic, climatic and environmental factors make it mandatory to use corrosion resistant materials.



STANDARD MACHINE ELEMENTS WORLDWIDE

ELESA-GANTER models all rights reserved in accordance with the law. Always mention the source when reproducing our drawings.