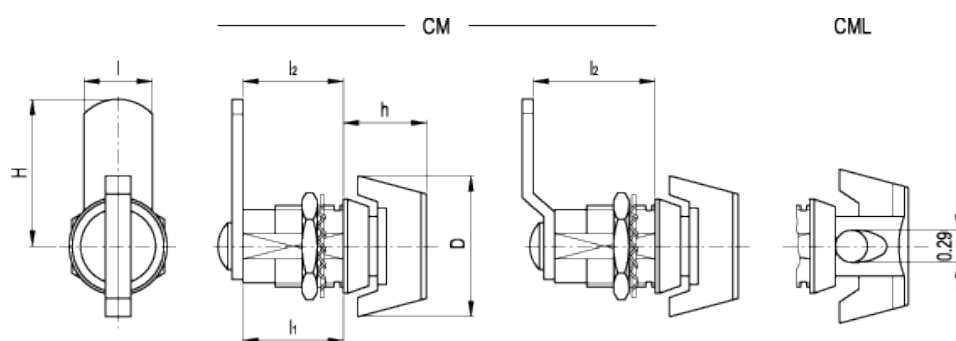
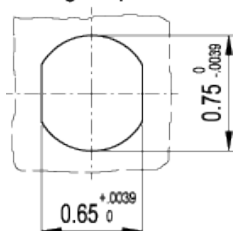


CM.

Latches with knob



Drilling template



american unit
metric unit

Elesa Standards		Main dimensions						Weight
Code	Description	H	l ₂	D	h	l	l ₁	lbs g
421211	CM.32-20	1.26 32	0.79 20	1.18 30	0.59 15	0.63 16	0.79 20	0.139 63
421213	CM.36-25	1.4 35.5	0.98 25	1.18 30	0.59 15	0.63 16	0.79 20	0.143 65
421221	CML.32-25	1.26 32	0.98 25	1.42 36	0.91 23	0.63 16	0.98 25	0.163 74
421223	CML.36-30	1.4 35.5	1.18 30	1.42 36	0.91 23	0.63 16	0.98 25	0.167 76

Material

Rotor, stator and knob in nickel-plated zinc alloy.

CML. with knob provided with a transversal hole to insert a padlock with diameter from 0.19 to 0.27 (5 to 7 mm).

Nut

Brass (M19x1).

Spring washer

Zinc-plated steel.

Washer (only for CML.)

PVC.

Closing lever

Zinc-plated steel, 0.10 (2.5 mm) thickness.

Screw

Zinc-plated steel (M5x8).

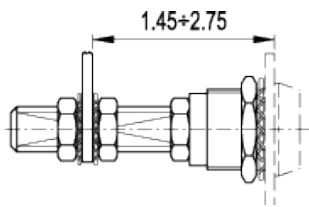
Rotation

90°.

Special executions and accessories (For sufficient quantities)

- Closing levers in other dimensions.

- Brass threaded extension for prolonged positioning of the lever (code 421137 description C.PQ M5/58).



elesa

STANDARD MACHINE ELEMENTS WORLDWIDE