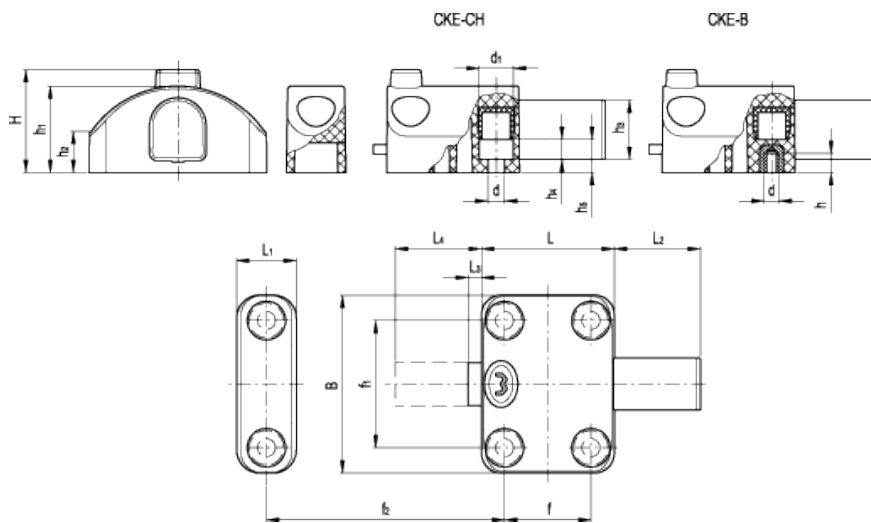


CKE.

Locking bolt



ELESA Original design



american unit
metric unit

Elesa Standards		Main dimensions													Mounting holes					Weight
Code	Description	B	L	L ₁	L ₂	L ₃	L ₄	f	f ₁	f ₂	H	h ₁	h ₂	h ₃	d	d ₁	h ₄	h ₅	h	lbs g
7901	CKE.40 CH-5	2.11 53.5	1.57 40	0.71 18	1.02 26	0.16 4	1.18 30	1.02 26	1.5 38	1.22-1.65 31-42	1.22 31	1.02 26	0.47 12	0.69 17.5	0.22 5.5	0.39 10	0.24 6	0.39 10	-	0.187 85
7905	CKE.40 B-M5	2.11 53.5	1.57 40	0.71 18	1.02 26	0.16 4	1.18 30	1.02 26	1.5 38	1.22-1.65 31-42	1.22 31	1.02 26	0.47 12	0.69 17.5	- M5	-	-	-	0.24 6	0.22 100

Body

Glass-fibre reinforced polyamide based (PA) technopolymer with security anti-intrusion-profiled slot. Resistant to solvents, oils, greases and other chemical agents.

Colour

Black, matte finish.

Closing button

Technopolymer, red colour.

Closing lever

AISI 304 stainless steel.

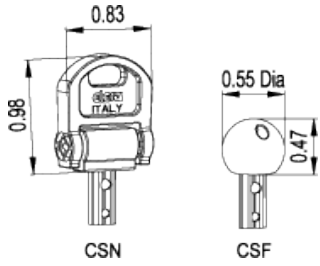
Standard executions

- CKE.40 CH: holes for M5 cylindrical-head screws.
- CKE.40 B: brass bosses, tapped blind holes.

Key (to order separately)

- CSN (code 6951): acetal resin based (POM) technopolymer fold-away key, red colour, anti-intrusion-profiled stainless steel insert.

- CSF (code 6952): polymide based (PA) technopolymer ball key, red colour, anti-intrusion-profiled stainless steel insert. On request and for sufficient quantities the security keys can be supplied in black.



Functioning of the safety device

CKE. locking bolt has been designed to be opened only by authorised people, provided with the proper key.

1. Locking: press the locking button until the red part of it disappears completely into the body and the device snaps.
- Warning: be sure the key is not inserted during locking operations.
2. Unlocking: insert the key (without turning it) and make the device snap.

