

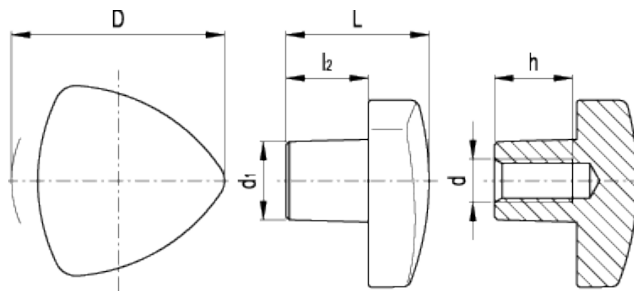
VTRM-SST

Lock knobs

elesa

METRIC

INOX
Stainless Steel



american unit
metric unit

Elesa Standards		Main dimensions				Mounting hole		Weight
Code	Description	D	L	d ₁	l ₂	d	h	lbs g
85002	VTRM-SST-32-M5	1.26 32	0.83 21	0.47 12	0.47 12	- M5	0.39 10	0.132 60
85012	VTRM-SST-40-M6	1.57 40	1.02 26	0.55 14	0.55 14	- M6	0.47 12	0.207 94
85022	VTRM-SST-50-M8	1.97 50	1.3 33	0.71 18	0.75 19	- M8	0.59 15	0.341 155
85032	VTRM-SST-60-M10	2.36 60	1.61 41	0.79 20	0.91 23	- M10	0.71 18	0.54 245

Material

Stainless steel (precision casting), sandblasted matte finish.

Assembly

Hub, tapped blind hole.

Special executions on request (For sufficient quantities)

- Tapped through hole.
- H7 reamed blind hole.
- Mirror polished finish.

Features and applications

Stainless steel, thanks to its high resistance to corrosion, allows the application of these lock knobs on machines and equipment in those sectors where laws or particular hygienic, climatic and environmental factors make it mandatory to use corrosion resistant materials.

elesa

STANDARD MACHINE ELEMENTS WORLDWIDE