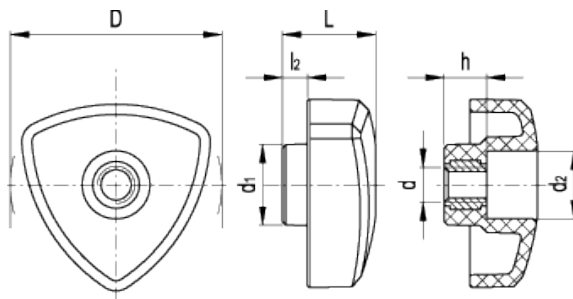


VTR.FP

Lock knobs



american unit
metric unit

Elesa Standards		Main dimensions					Mounting hole		Weight
Code	Description	D	L	d ₁	d ₂	l ₂	d _{6H}	h	lbs g
83021	VTR.32 FP-M5	1.26 32	0.55 14	0.55 14	0.39 10	0.16 4	- M5	0.24 6	0.011 5
83421	VTR.40 FP-M6	1.57 40	0.71 18	0.63 16	0.47 12	0.2 5	- M6	0.31 8	0.018 8
83821	VTR.50 FP-M8	1.97 50	0.87 22	0.75 19	0.63 16	0.24 6	- M8	0.39 10	0.031 14
84221	VTR.60 FP-M10	2.36 60	1.02 26	0.87 22	0.75 19	0.28 7	- M10	0.47 12	0.048 22

Material

Polyamide based (PA) technopolymer. Resistant to solvents, oils, greases and other chemical agents.

Colour

Black, glossy finish.

Assembly

Brass boss, tapped through hole.



STANDARD MACHINE ELEMENTS WORLDWIDE

ELESA models all rights reserved in accordance with the law. Always mention the source when reproducing our drawings.