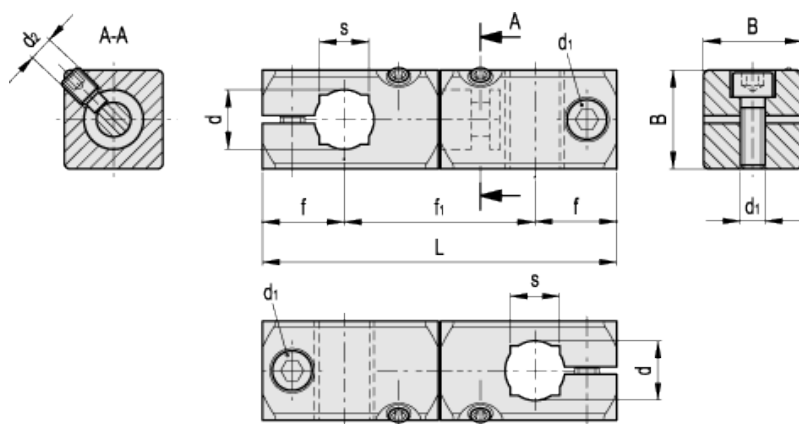


MSM-G

Twistable two-way connecting clamps



Elesa Standards		Main dimensions							GN 511 clamping kit for d1	Weight	
Code	Description	d	L	B	d ₁	d ₂	f	f ₁		s	g
500201	MSM-G-8-8-ANB	8	52.5	16	M4	M4	13	26.5	-	GN 511-M4-16	34
500205	MSM-G-10-10-ANB	10	63.5	20	M5	M5	15.5	32.5	8	GN 511-M5-20	65
500209	MSM-G-12-12-ANB	12	71.5	20	M5	M5	16.5	38.5	10	GN 511-M5-20	73
500213	MSM-G-15-15-ANB	15	87.5	25	M6	M6	20	47.5	12	GN 511-M6-25	143
500217	MSM-G-16-16-ANB	16	90.5	25	M6	M6	20	50.5	-	GN 511-M6-25	139
500203	MSM-G-8-8-MT	8	52.5	16	M4	M4	13	26.5	-	GN 511-M4-16	34
500207	MSM-G-10-10-MT	10	63.5	20	M5	M5	15.5	32.5	8	GN 511-M5-20	65
500211	MSM-G-12-12-MT	12	71.5	20	M5	M5	16.5	38.5	10	GN 511-M5-20	73
500215	MSM-G-15-15-MT	15	87.5	25	M6	M6	20	47.5	12	GN 511-M6-25	143
500219	MSM-G-16-16-MT	16	90.5	25	M6	M6	20	50.5	-	GN 511-M5-25	139

Material
Aluminium.

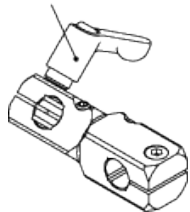
Clamping and grub screws
AISI 304 stainless steel with hexagon socket.

Standard executions
- MSM-G-ANB: anodised aluminium, black colour.
- MSM-G-MT: natural aluminium, matte finish.

Dimension table key
d = hole diameter for shaft tolerance h11.

d1 = clamping screws which can be replaced with [GN 511](#) clamping kit.

GN 511



STANDARD MACHINE ELEMENTS WORLDWIDE