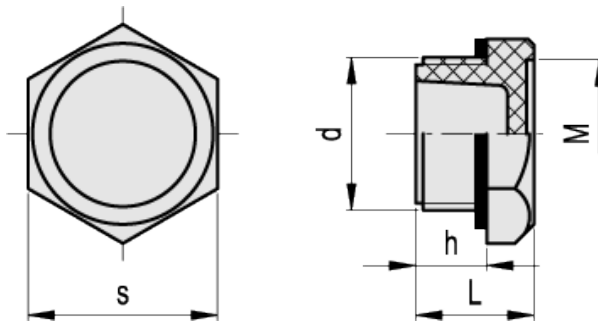


# TN. Plugs



ELESA Original design



american unit  
metric unit

| Elesa Standards |             | Main dimensions |            |            |            |              | Tightening torque | Weight      |
|-----------------|-------------|-----------------|------------|------------|------------|--------------|-------------------|-------------|
| Code            | Description | d               | h          | s          | L          | M            | [ft·lb]<br>[Nm]   | lbs<br>g    |
| 58284           | TN.10x1.5   | -<br>M10x1.5    | 0.35<br>9  | 0.75<br>19 | 0.63<br>16 | 0.59<br>15   | 3÷4<br>4÷5        | 0.009<br>4  |
| 58285           | TN.12x1.5   | -<br>M12x1.5    | 0.35<br>9  | 0.75<br>19 | 0.63<br>16 | 0.59<br>15   | 4÷6<br>6÷8        | 0.009<br>4  |
| 58286           | TN.14x1.5   | -<br>M14x1.5    | 0.35<br>9  | 0.75<br>19 | 0.63<br>16 | 0.59<br>15   | 4÷6<br>6÷8        | 0.011<br>5  |
| 58287           | TN.16x1.5   | -<br>M16x1.5    | 0.35<br>9  | 0.87<br>22 | 0.63<br>16 | 0.67<br>17   | 6÷7<br>8÷10       | 0.015<br>7  |
| 58288           | TN.18x1.5   | -<br>M18x1.5    | 0.43<br>11 | 1.02<br>26 | 0.71<br>18 | 0.81<br>20.5 | 6÷7<br>8÷10       | 0.018<br>8  |
| 58289           | TN.20x1.5   | -<br>M20x1.5    | 0.43<br>11 | 1.02<br>26 | 0.71<br>18 | 0.81<br>20.5 | 6÷7<br>8÷10       | 0.018<br>8  |
| 58290           | TN.22x1.5   | -<br>M22x1.5    | 0.47<br>12 | 1.26<br>32 | 0.79<br>20 | 0.98<br>25   | 7÷9<br>10÷12      | 0.026<br>12 |
| 58291           | TN.25x1.5   | -<br>M25x1.5    | 0.47<br>12 | 1.26<br>32 | 0.79<br>20 | 0.98<br>25   | 7÷9<br>10÷12      | 0.026<br>12 |
| 58292           | TN.26x1.5   | -<br>M26x1.5    | 0.47<br>12 | 1.26<br>32 | 0.79<br>20 | 0.98<br>25   | 7÷9<br>10÷12      | 0.031<br>14 |
| 58293           | TN.35x1.5   | -<br>M35x1.5    | 0.51<br>13 | 1.5<br>38  | 0.87<br>22 | 1.22<br>31   | 11÷13<br>15÷18    | 0.033<br>15 |

| Elesa Standards |             | Main dimensions |            |            |            |           | Tightening torque | Weight      |
|-----------------|-------------|-----------------|------------|------------|------------|-----------|-------------------|-------------|
| Code            | Description | d               | h          | s          | L          | M         | [ft·lb]<br>[Nm]   | lbs<br>g    |
| 58401           | TN.40x1.5   | -<br>M40x1.5    | 0.55<br>14 | 1.81<br>46 | 0.94<br>24 | 1.5<br>38 | 11÷13<br>15÷18    | 0.044<br>20 |

american unit  
metric unit

| Elesa Standards |             | Main dimensions |            |            |            |              | Tightening torque | Weight      |
|-----------------|-------------|-----------------|------------|------------|------------|--------------|-------------------|-------------|
| Code            | Description | d               | h          | s          | L          | M            | [ft·lb]<br>[Nm]   | lbs<br>g    |
| 58294           | TN.1/8      | -<br>G 1/8      | 0.35<br>9  | 0.75<br>19 | 0.63<br>16 | 0.59<br>15   | 3÷4<br>4÷6        | 0.009<br>4  |
| 58295           | TN.1/4      | -<br>G 1/4      | 0.35<br>9  | 0.75<br>19 | 0.63<br>16 | 0.59<br>15   | 3÷4<br>4÷6        | 0.009<br>4  |
| 58296           | TN.3/8      | -<br>G 3/8      | 0.35<br>9  | 0.87<br>22 | 0.63<br>16 | 0.67<br>17   | 6÷7<br>8÷10       | 0.011<br>5  |
| 58297           | TN.1/2      | -<br>G 1/2      | 0.43<br>11 | 1.02<br>26 | 0.71<br>18 | 0.81<br>20.5 | 6÷7<br>8÷10       | 0.018<br>8  |
| 58298           | TN.3/4      | -<br>G 3/4      | 0.47<br>12 | 1.26<br>32 | 0.79<br>20 | 0.98<br>25   | 7÷9<br>10÷12      | 0.031<br>14 |
| 58299           | TN.1        | -<br>G 1        | 0.51<br>13 | 1.5<br>38  | 0.87<br>22 | 1.22<br>31   | 9÷11<br>12÷15     | 0.04<br>18  |
| 58411           | TN.1¼       | -<br>G1¼        | 0.55<br>14 | 1.81<br>46 | 0.94<br>24 | 1.5<br>38    | 11÷13<br>15÷18    | 0.044<br>20 |
| 58413           | TN.1½       | -<br>G1½        | 0.59<br>15 | 2.17<br>55 | 1.02<br>26 | 1.81<br>46   | 11÷13<br>15÷18    | 0.053<br>24 |

american unit  
metric unit

| Elesa Standards |             | Main dimensions |            |            |            |              | Tightening torque | Weight      |
|-----------------|-------------|-----------------|------------|------------|------------|--------------|-------------------|-------------|
| Code            | Description | d               | h          | s          | L          | M            | [ft·lb]<br>[Nm]   | lbs<br>g    |
| 958295          | TN.1/4 NPT  | 1/4 NPT<br>-    | 0.35<br>9  | 0.75<br>19 | 0.63<br>16 | 0.59<br>15   | 3÷4<br>4÷6        | 0.009<br>4  |
| 958296          | TN.3/8 NPT  | 3/8 NPT<br>-    | 0.35<br>9  | 0.87<br>22 | 0.63<br>16 | 0.67<br>17   | 6÷7<br>8÷10       | 0.011<br>5  |
| 958297          | TN.1/2 NPT  | 1/2 NPT<br>-    | 0.43<br>11 | 1.02<br>26 | 0.71<br>18 | 0.81<br>20.5 | 6÷7<br>8÷10       | 0.018<br>8  |
| 958298          | TN.3/4 NPT  | 3/4 NPT<br>-    | 0.47<br>12 | 1.26<br>32 | 0.79<br>20 | 0.98<br>25   | 7÷9<br>10÷12      | 0.031<br>14 |

#### Material

Glass-fibre reinforced polyamide based (PA) technopolymer. Resistant to solvents, oils, greases and other chemical agents.

#### Colour

Black, matte finish.

#### Flat packing ring

NBR synthetic rubber.

#### Maximum continuous working temperature

270°F (130°C).

#### Accessories on request

TN. plugs are suitable for mounting aluminium plates with graphic symbols type [MH](#).

#### Technical data

The tightening torque indicated in the table guarantees an optimal tightness, keeping the packing ring in the correct position.