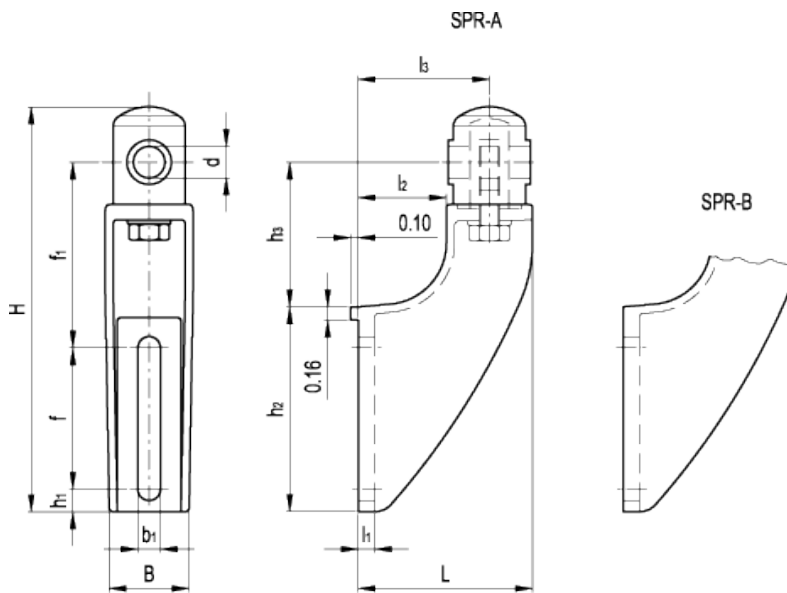


# SPR.

## Guide rail brackets for linear and angular positioning



american unit  
metric unit

Elesa Standards		Main dimensions												Guide assembly hole	Weight
Code	Description	H	L	B	f	f <sub>1</sub>	b <sub>1</sub>	h <sub>1</sub>	h <sub>2</sub>	h <sub>3</sub>	l <sub>1</sub>	l <sub>2</sub>	l <sub>3</sub>	d	lbs g
419760	SPR.12-A	6.22 158	2.76 70	1.46 37	1.65 42	3.07 78	0.43 11	0.59 15	2.99 76	2.36 60	0.31 8	1.18 30	1.97 50	0.47 12	0.388 176
419761	SPR.14-A	6.22 158	2.76 70	1.46 37	1.65 42	3.07 78	0.43 11	0.59 15	2.99 76	2.36 60	0.31 8	1.18 30	1.97 50	0.55 14	0.385 175
419762	SPR.16-A	6.22 158	2.76 70	1.46 37	1.65 42	3.07 78	0.43 11	0.59 15	2.99 76	2.36 60	0.31 8	1.18 30	1.97 50	0.63 16	0.383 174
419664	SPR.12-B	7.6 193	3.35 85	1.61 41	2.72 69	3.54 90	0.43 11	0.43 11	3.94 100	2.76 70	0.31 8	1.69 43	2.52 64	0.47 12	0.432 196
419665	SPR.14-B	7.6 193	3.35 85	1.61 41	2.72 69	3.54 90	0.43 11	0.43 11	3.94 100	2.76 70	0.31 8	1.69 43	2.52 64	0.55 14	0.43 195
419666	SPR.16-B	7.6 193	3.35 85	1.61 41	2.72 69	3.54 90	0.43 11	0.43 11	3.94 100	2.76 70	0.31 8	1.69 43	2.52 64	0.63 16	0.427 194

Bracket  
Glass-fibre reinforced polyamide based (PA) technopolymer. Resistant to solvents, oils, greases and other chemical agents. Hole for clamping system assembly.

Colour

Black, matte finish.

**Guide rail cylinder**

Glass-fibre reinforced technopolymer. Black colour, matte finish.

**Clamping system**

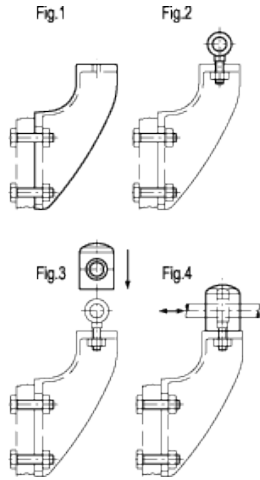
Nickel-plated AISI 431 stainless steel eye screw, nut and washer in AISI 304 stainless steel.

**Features and applications**

SPR. guide rail brackets are particularly suitable when a linear and angular positioning is required.

**Assembly instructions**

- Fit the guide rail bracket (Fig. 1).
- Insert the eye screw in the guide rail support hole and screw the relevant nut and washer (Fig. 2).
- Assemble the guide rail cylinder on the eye (Fig. 3).
- Insert the guide pin in the guide rail cylinder hole. Set its linear and angular position and then fasten the nut (Fig. 4).



**Accessories on request**

Spacer for guide rail bracket DSG-A (code 419676) or DSG-B (code 419677) in glass-fibre reinforced technopolymer, black colour, matte finish.

