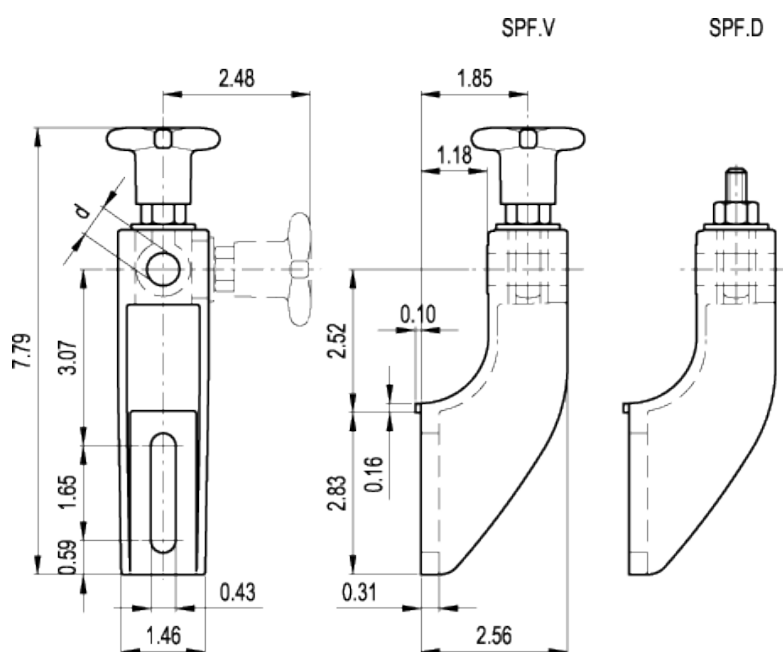


SPF.

Guide rail brackets for linear positioning



american unit
metric unit

Elesa Standards		Guide assembly hole	Weight
Code	Description	d	lbs g
419652	SPF.V-12	0.47 12	0.43 195
419654	SPF.V-14	0.55 14	0.419 190
419656	SPF.V-16	0.63 16	0.407 185
419653	SPF.D-12	0.47 12	0.385 175
419655	SPF.D-14	0.55 14	0.374 170
419657	SPF.D-16	0.63 16	0.363 165

Elesa Standards		Guide assembly hole	Weight
Code	Description	d	lbs g

Bracket

Glass-fibre reinforced polyamide based (PA) technopolymer. Resistant to solvents, oils, greases and other chemical agents. Housings for horizontal or vertical assembly of clamping system.

Colour

Black, matte finish.

Clamping system

AISI 431 stainless steel eye screw and AISI 304 stainless steel washer.

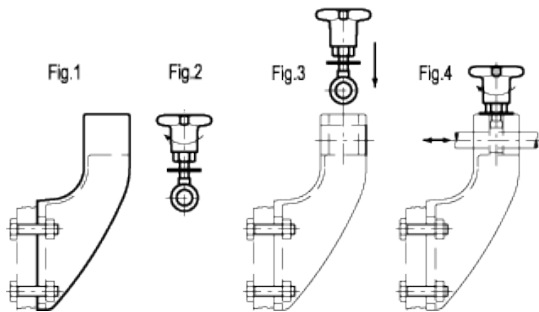
- SPF.V: with glass-fibre reinforced technopolymer clamping knob, black colour, matte finish. Nickel-plated brass insert with tapped hole and hexagonal end.
- SPF.D: with AISI 304 stainless steel clamping nut.

Features and applications

SPF. guide rail brackets with horizontal or vertical clamping system are particularly suitable when a linear positioning only is required. The vertical or horizontal positioning of the eye screw improve the assembly where necessary.

Assembly instructions

- Fit the guide rail bracket (Fig. 1).
- Insert the washer into the eye screw and screw either the knob or the nut (Fig. 2).
- Insert the eye in its housing either in the horizontal or vertical position (Fig. 3)
- Insert the guide pin in its clamping hole, set the linear positioning and then fasten (Fig. 4).



Accessories on request

Spacer for guide rail bracket DSG-A (code 419676), in glass-fibre reinforced technopolymer, black colour, matte finish.

