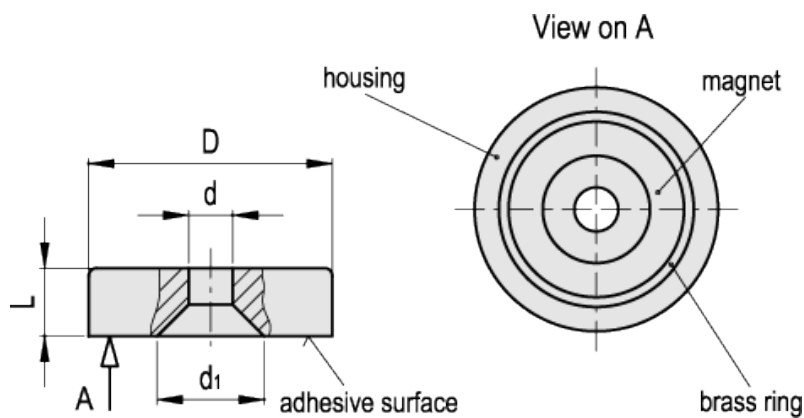
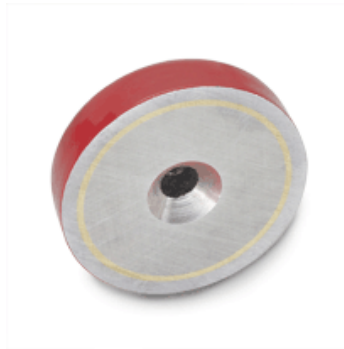


Flat retaining magnets with pass-through hole

AN



Elesa Standards		Main dimensions				Nominal adhesive forces *		Weight
Code	Description	D	L	d	d ₁	[N]		g
501401	RME-AN-19	19	7.5	3.7	7.5	30		17
501411	RME-AN-29	29	8.5	4.7	10	50		43
501421	RME-AN-38	38	10.5	4.7	11	130		83

* The values of the nominal adhesive forces are approximate and refer to magnetic properties of laboratory samples.

Material
Lacquered steel housing.

Standard execution
(AlNiCo) Aluminium-nickel-cobalt magnet, resistant to temperatures up to 280°C.
Red lacquering, resistant to temperatures up to 180°C.
[Technical data.](#)

Features and applications

RME flat retaining magnets are shielded magnetic systems with high performances and moderate overall dimensions. To ensure that the adhesive force is not impaired, the fixing screws must be made out of non-magnetic material.