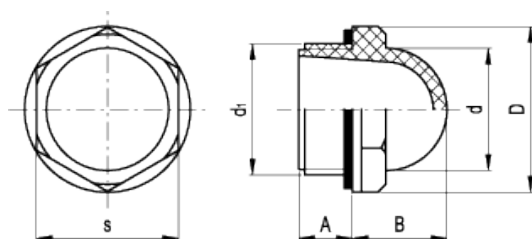


HCFE.

Oil circulation sights



ELESA Original design



american unit
metric unit

| Elesa Standards | | Main dimensions | | | | | | Tightening torque | | Weight |
|-----------------|-------------|-----------------|--------------|--------------|--------------|------------|--------------|-------------------|-------------|--------|
| Code | Description | d ₁ | A | B | D | d | s | [ft·lb] [Nm] | lbs g | |
| 10851 | HCFE.12-3/8 | - G 3/8 | 0.3 7.5 | 0.51 13 | 0.89 22.5 | 0.59 15 | 0.75 19 | 2÷4 3÷5 | 0.009 4 | |
| 10901 | HCFE.15-1/2 | - G 1/2 | 0.41 10.5 | 0.63 16 | 1.02 26 | 0.75 19 | 0.87 22 | 3÷4 4÷6 | 0.011 5 | |
| 11001 | HCFE.20-3/4 | - G 3/4 | 0.41 10.5 | 0.77 19.5 | 1.24 31.5 | 0.98 25 | 1.06 27 | 4÷6 6÷8 | 0.018 8 | |
| 11101 | HCFE.24-1 | - G 1 | 0.43 11 | 0.94 24 | 1.65 42 | 1.22 31 | 1.42 36 | 6÷7 8÷10 | 0.04 18 | |
| 11111 | HCFE.30-1¼ | - G 1¼ | 0.45 11.5 | 1.04 26.5 | 1.83 46.5 | 1.5 38 | 1.59 40.5 | 9÷11 12÷15 | 0.048 22 | |

Material

Transparent polyamide based (PA-T) technopolymer. Resistant to solvents, oils with additives, greases, acids and alkali. Avoid contact with alcohol or detergents containing alcohol.

Flat packing ring

NBR synthetic rubber.

Maximum continuous working temperature

230°F (110°C).

Accessories on request

Brass nut type [GH](#), for fitting to reservoirs with wall thickness smaller than 0.20 (5 mm).

Technical data

An adequate tightening torque (see table below) is recommended when screwing the oil circulation sight, so as to guarantee optimal tightness without any deformation of the packing ring. Suggested tightening torque is the result of laboratory tests at ambient temperature (73°F - 23°C) with sight, packing ring and reservoir walls perfectly cleaned.

Note

For use with fluids containing special additives, please contact ELESA Sales Department.



ELESA models all rights reserved in accordance with the law. Always mention the source when reproducing our drawings.