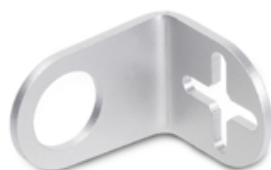
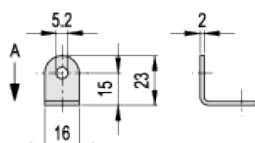


MSM-LA

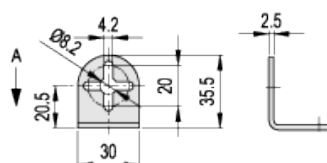
Sensor holder



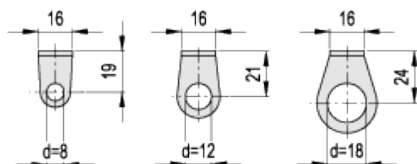
MSM-LA-16



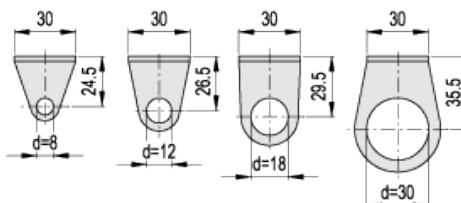
MSM-LA-30



Views on A



Views on A



Elesa Standards		Main dimensions	Weight
Code	Description	d	g
500351	MSM-LA-B8-16	8	9
500355	MSM-LA-B12-16	12	10
500359	MSM-LA-B18-16	18	13
500353	MSM-LA-B8-30	8	24
500357	MSM-LA-B12-30	12	26
500361	MSM-LA-B18-30	18	30
500363	MSM-LA-B30-30	30	36

Material

Sandblasted AISI 304 stainless steel, matte finish.

Features and applications

In MSM-LA-30 sensor holders, the cross-shaped hole provides a more precise regulation for fixing to [MSM-F](#) connecting clamps and it also allows the use of two clamping screws.

