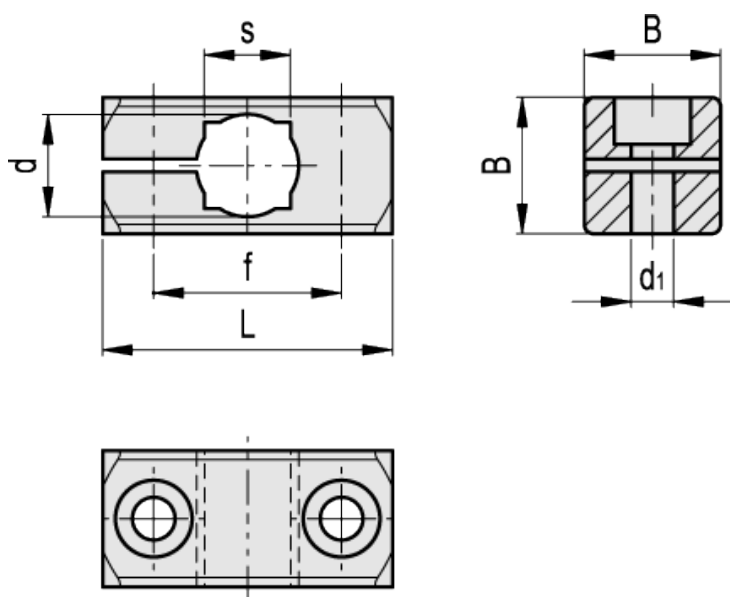


MSM-I

Connecting clamps



Elesa Standards		Main dimensions						GN 511 clamping kit for d1	Weight
Code	Description	d	L	B	d ₁	f	s		g
500301	MSM-I-8-ANB	8	31.5	14	M4	22	-	GN 511-M4-20	11
500305	MSM-I-10-ANB	10	38	16	M5	27	8	GN 511-M5-25	18
500309	MSM-I-12-ANB	12	38	16	M5	27	10	GN 511-M5-25	20
500313	MSM-I-15-ANB	15	45	20	M6	32	12	GN 511-M6-25	31
500317	MSM-I-16-ANB	16	45	20	M6	32	-	GN 511-M6-25	29
500321	MSM-I-20-ANB	20	50	25	M6	36	16	GN 511-M6-32	52
500303	MSM-I-8-MT	8	31.5	14	M4	22	-	GN 511-M4-20	11
500307	MSM-I-10-MT	10	38	16	M5	27	8	GN 511-M5-25	18
500311	MSM-I-12-MT	12	38	16	M5	27	10	GN 511-M5-25	37
500315	MSM-I-15-MT	15	45	20	M6	32	12	GN 511-M6-25	40
500319	MSM-I-16-MT	16	45	20	M6	32	-	GN 511-M6-25	29
500323	MSM-I-20-MT	20	50	25	M6	36	16	GN 511-M6-32	52

Elesa Standards		Main dimensions						GN 511 clamping kit for d1	Weight
Code	Description	d	L	B	d ₁	f	s		g

Material
Aluminium.

Standard executions

- MSM-I -ANB: anodised aluminium, black colour.
- MSM-I -MT: natural aluminium, matte finish.

Dimension table key

d = hole diameter for shaft tolerance h11.

d₁ = holes for clamping screws with threading as indicated in the table or for [GN 511](#) clamping kit.

f = fixing holes centre distance: it allows matching and fixing to [MSM-B](#) connecting clamps and [MSM-P](#) flanged bolts.

GN 511

