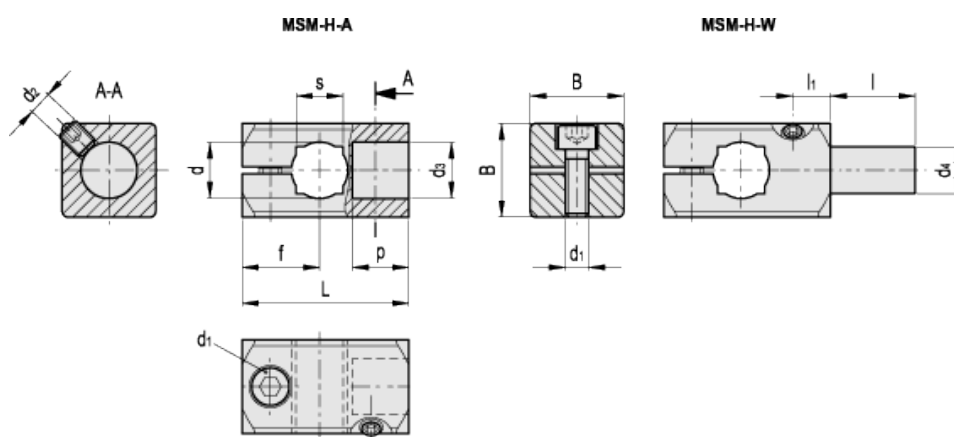


MSM-H

Connecting clamps



Elesa Standards		Main dimensions											GN 511 clamping kit for d1	Weight	
Code	Description	d	L	B	d ₁	d ₂	d _{3 H9}	p	d _{4 h11}	l	f	l ₁		s	g
500251	MSM-H-8-8-A-ANB	8	26	16	M4	M4	8	8	-	-	13	5.5	-	GN 511-M4-16	20
500259	MSM-H-10-10-A-ANB	10	31.5	20	M5	M5	10	10	-	-	15.5	7	8	GN 511-M5-20	150
500267	MSM-H-12-12-A-ANB	12	35.5	20	M5	M5	12	12	-	-	16.5	8	10	GN 511-M5-20	28
500275	MSM-H-15-15-A-ANB	15	43.5	25	M6	M6	15	15	-	-	20	10	12	GN 511-M6-25	54
500283	MSM-H-16-16-A-ANB	16	45	25	M6	M6	16	16	-	-	20	11	-	GN 511-M6-25	54
500253	MSM-H-8-8-A-MT	8	26	16	M4	M4	8	8	-	-	13	5.5	-	GN 511-M4-16	20
500261	MSM-H-10-10-A-MT	10	31.5	20	M5	M5	10	10	-	-	15.5	7	8	GN 511-M5-20	150
500269	MSM-H-12-12-A-MT	12	35.5	20	M5	M5	12	12	-	-	16.5	8	10	GN 511-M5-20	28
500277	MSM-H-15-15-A-MT	15	43.5	25	M6	M6	15	15	-	-	20	10	12	GN 511-M6-25	54
500285	MSM-H-16-16-A-MT	16	45	25	M6	M6	16	16	-	-	20	11	-	GN 511-M6-25	54
500255	MSM-H-8-8-W-ANB	8	26	16	M4	M4	-	-	8	16	13	5.5	-	GN 511-M4-16	20
500263	MSM-H-10-10-W-ANB	10	31.5	20	M5	M5	-	-	10	17	15.5	7	8	GN 511-M5-20	150
500271	MSM-H-12-12-W-ANB	12	35.5	20	M5	M5	-	-	12	19	16.5	8	10	GN 511-M5-20	28
500279	MSM-H-15-15-W-ANB	15	43.5	25	M6	M6	-	-	15	21	20	10	12	GN 511-M6-25	54
500287	MSM-H-16-16-W-ANB	16	45	25	M6	M6	-	-	16	24	20	11	-	GN 511-M6-25	54
500257	MSM-H-8-8-W-MT	8	26	16	M4	M4	-	-	8	16	13	5.5	-	GN 511-M4-16	20

Elesa Standards		Main dimensions												GN 511 clamping kit for d1	Weight
Code	Description	d	L	B	d ₁	d ₂	d _{3 H9}	p	d _{4 h11}	l	f	l ₁	s		g
500265	MSM-H-10-10-W-MT	10	31.5	20	M5	M5	-	-	10	17	15.5	7	8	GN 511-M5-20	150
500273	MSM-H-12-12-W-MT	12	35.5	20	M5	M5	-	-	12	19	16.5	8	10	GN 511-M5-20	28
500281	MSM-H-15-15-W-MT	15	43.5	25	M6	M6	-	-	15	21	20	10	12	GN 511-M6-25	54
500289	MSM-H-16-16-W-MT	16	45	25	M6	M6	-	-	16	24	20	11	-	GN 511-M6-25	54

Material
Aluminium.

Clamping and grub screws
AISI 304 stainless steel with hexagon socket.

Standard executions

With hole tolerance H9:

- MSM-H-A-ANB: anodised aluminium, black colour.
- MSM-H-A-MT: natural aluminium, matte finish.

With zinc-plated steel bolt tolerance h11:

- MSM-H-W-ANB: anodised aluminium, black colour.
- MSM-H-W-MT: natural aluminium, matte finish.

Dimension table key

d = hole diameter for shaft tolerance h11.

d1= clamping screws which can be replaced with [GN 511](#) clamping kit.

GN 511

