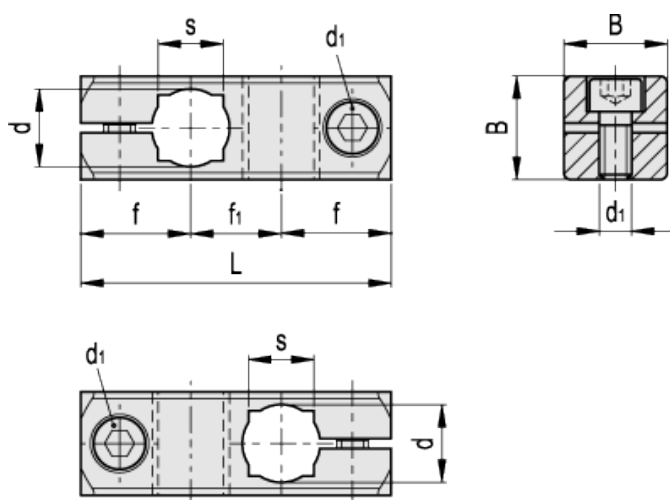


# MSM-C

## Two-way connecting clamps



Elesa Standards		Main dimensions							GN 511 clamping kit for d1	Weight
Code	Description	d	L	B	d <sub>1</sub>	f	f <sub>1</sub>	s		g
500051	MSM-C-8-8-ANB	8	37	14	M4	13.5	10	-	GN 511-M4-14	16
500055	MSM-C-10-10-ANB	10	46	16	M5	17	12	8	GN 511-M5-16	25
500059	MSM-C-12-12-ANB	12	48	16	M5	17	14	10	GN 511-M5-16	24
500063	MSM-C-15-15-ANB	15	58	20	M6	20.5	17	12	GN 511-M6-20	44
500067	MSM-C-16-16-ANB	16	59	20	M6	20.5	18	-	GN 511-M6-20	43
500071	MSM-C-20-20-ANB	20	65	25	M6	21.5	22	16	GN 511-M6-25	67
500053	MSM-C-8-8-MT	8	37	14	M4	13.5	10	-	GN 511-M4-14	16
500057	MSM-C-10-10-MT	10	46	16	M5	17	12	8	GN 511-M5-16	25
500061	MSM-C-12-12-MT	12	48	16	M5	17	14	10	GN 511-M5-16	23
500065	MSM-C-15-15-MT	15	58	20	M6	20.5	17	12	GN 511-M6-20	44
500069	MSM-C-16-16-MT	16	59	20	M6	20.5	18	-	GN 511-M6-20	43
500073	MSM-C-20-20-MT	20	65	25	M6	21.5	22	16	GN 511-M6-25	67

Material  
Aluminium.

Clamping screws  
AISI 304 stainless steel with hexagon socket.

Standard executions

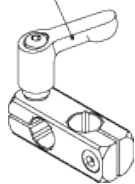
- MSM-C-ANB: anodised aluminium, black colour.
- MSM-C-MT: natural aluminium, matte finish.

*Dimension table key*

d = hole diameter for shaft tolerance h11.

d1= clamping screws which can be replaced with [GN 511](#) clamping kit.

GN 511



---

**elesa**

STANDARD MACHINE ELEMENTS WORLDWIDE