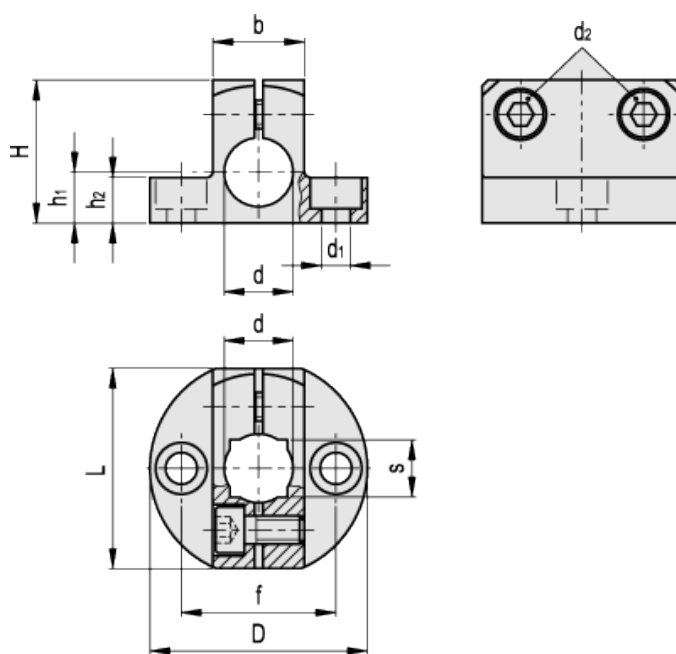


MSM-B

Base for connecting clamps



Elesa Standards		Main dimensions											GN 511 clamping kit for d2	Weight
Code	Description	d	L	D	H	b	d ₁	d ₂	h ₁	h ₂	f	s		g
500001	MSM-B-8-ANB	8	29	31.5	20	14	M4	M4	7	7	22	-	GN 511-M4-14	23
500005	MSM-B-10-ANB	10	35	38	24	16	M5	M5	8	8	27	8	GN 511-M5-16	36
500009	MSM-B-12-ANB	12	35	38	25	16	M5	M5	8	8	27	10	GN 511-M5-16	33
500013	MSM-B-15-ANB	15	41	45	30	20	M6	M6	10	10	32	12	GN 511-M 6-20	57
500017	MSM-B-16-ANB	16	41	45	31	20	M6	M6	10	10	32	-	GN 511-M6-20	57
500021	MSM-B-20-ANB	20	44	50	35	25	M6	M6	12.5	12.5	36	16	GN 511-M6-25	80
500003	MSM-B-8-MT	8	29	31.5	20	14	M4	M4	7	7	22	-	GN 511-M4-14	23
500007	MSM-B-10-MT	10	35	38	24	16	M5	M5	8	8	27	8	GN 511-M5-16	36
500011	MSM-B-12-MT	12	35	38	25	16	M5	M5	8	8	27	10	GN 511-M5-16	33
500015	MSM-B-15-MT	15	41	45	30	20	M6	M6	10	10	32	12	GN 511-M6-20	57
500019	MSM-B-16-MT	16	41	45	31	20	M6	M6	10	10	32	-	GN 511-M6-20	57

Elesa Standards		Main dimensions										GN 511 clamping kit for d2	Weight	
Code	Description	d	L	D	H	b	d ₁	d ₂	h ₁	h ₂	f		s	g
500023	MSM-B-20-MT	20	44	50	35	25	M6	M6	12.5	12.5	36	16	GN 511-M6-25	76

Material
Aluminium.

Clamping screws
AISI 304 stainless steel with hexagon socket.

Standard executions
- MSM-B-ANB: anodised aluminium, black colour.
- MSM-B-MT: natural aluminium, matte finish.

Dimension table key

d = hole diameter for shaft tolerance h11.

d₁ = holes for clamping screws with threading as indicated in the table.

d₂ = clamping screws which can be replaced with [GN 511](#) clamping kit.

f = fixing holes centre distance: it allows matching and fixing to [MSM-L](#) connecting clamps and [MSM-P](#) flanged bolts.

