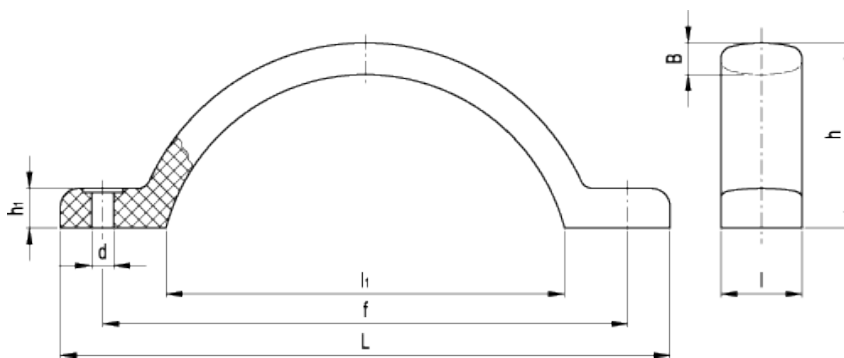


# M.478

## Bridge handle



american unit  
metric unit

Elesa Standards		Main dimensions							Mounting holes	F <sub>1</sub>	F <sub>2</sub>	L <sub>1</sub>	L <sub>2</sub>	Weight
Code	Description	L	f	l	h	B	l <sub>1</sub>	h <sub>1</sub>	d	[lbf] [N]	[lbf] [N]	[ft·lb] [J]	[ft·lb] [J]	lbs g
37451	M.478/150-6	6.81 173	5.91±0.02 150±0.5	0.91 23	2.07 52.5	0.35 9	4.45 113	0.35 9	0.24 6	403 1800	1008 4500	13 18	6 8	0.101 46

### Material

Glass-fibre reinforced polyamide based (PA) technopolymer. Resistant to solvents, oils, greases and other chemical agents.

### Colour

Black, glossy finish.

### Assembly

Through holes for screws or rivet.

### Technical data

Tensile stress and impact strength: F<sub>1</sub>, F<sub>2</sub>, L<sub>1</sub> and L<sub>2</sub> values reported in the table are the result of breaking tests carried out with the appropriate dynamometric equipment under the test conditions shown in the figure with ambient temperature.

