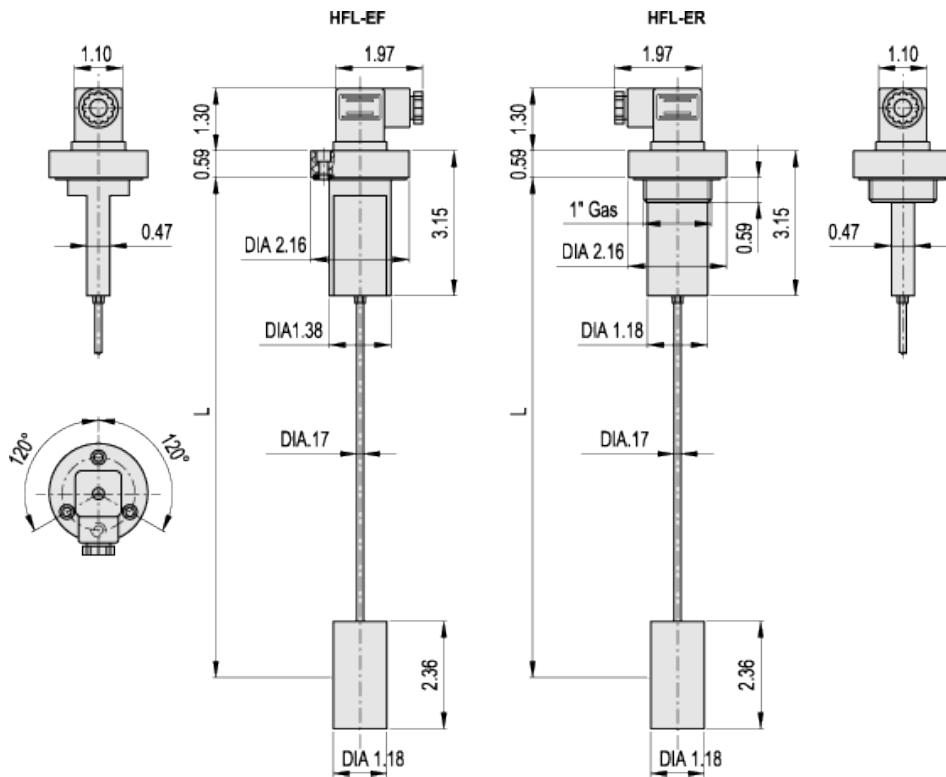


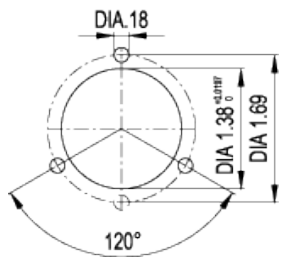
HFL-E

Level indicators with float and level electrical sensor



Drilling template for HFL-EF

american unit
metric unit



Elesa Standards		Main dimension	Weight
Code	Description	L	lbs g
111281	HFL-EF-NO	19.69 500	0.297 135
111283	HFL-EF-NC	19.69 500	0.297 135
111286	HFL-ER-NO	19.69 500	0.297 135
111288	HFL-ER-NC	19.69 500	0.297 135

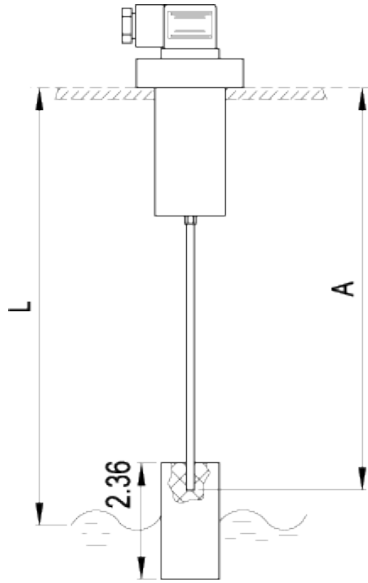


Table for cutting dipstick		
Control quote L=(inch mm)	Dipstick cut quote for minimum level A=(inch mm)	
4.7 120		4.6 116
5.5 140		5.4 137
6.3 160		6.2 158
7.1 180		7.0 179
7.9 200		7.9 200
8.7 220		8.7 221
9.4 240		9.5 242
10.2 260		10.4 263
11.0 280		11.2 284
11.8 300		12 305
12.6 320		12.8 326
13.4 340		13.7 347
14.2 360		14.5 368
15 380		15.3 389
15.7 400		16.1 410
16.5 420		17 431
17.3 440		17.8 452
18.1 460		18.6 473
17.9 480		19.5 494
19.7 500		20.3 515
Description	Electric contacts	Electric contacts
HFL-E-NO	Normally open in the presence of liquid	3A 60W 60VA 230VDC 230VAC
HFL-E-NC	Normally closed in the presence of liquid	3A 60W 60VA 230VDC 230VAC

Material

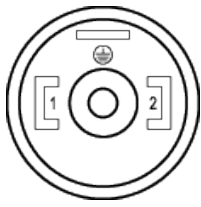
Polyamide-based technopolymer (PA), colour grey. Resistant to solvents, oils, greases and other chemicals.

Packing rings

- TPE flat gasket (HFL-EF).
- NBR synthetic rubber O-Ring (HFL-ER).

Connector with sensor block

Side output, colour grey, with a built-in reed switch. Includes protection against water sprays with protection class IP 65 according to UNI 529 table.



Dipstick

AISI 304 stainless steel tube, fastened to the body by a nickel-plated brass coupler.

Float

NBR synthetic rubber.

Standard executions

- HFL-EF: flange with 3 holes at 120° for 3 socket head screws in galvanised steel, included in the supply. Can be assembled also with 2 holes at 180°.
- HFL-ER: threaded coupler.

Maximum continuous working temperature

80°C.

Special executions on request

- Level indicators in different materials for use with particularly aggressive fluids and/or maximum working temperature up to 120°C.
- Dipsticks in different lengths and/or in AISI 316 stainless steel.
- Float with through holes to allow positioning according to different needs, avoiding cutting the dipstick.
- Double dipstick and double float manufactured for double minimum and maximum level reading.

Features and applications

HFL-E level indicators show a minimum or maximum default level, according to the application needs.

Highly versatile, these indicators allow to define the most accurate set point by simply disassembling the dipstick float and cutting the dipstick exactly where needed, according to the specifications shown in the table.

Free from magnetic parts, the float is integral to the dipstick making this level indicator ideal for use in tanks containing dirty liquids, water, oil, coolant oil, also with iron metal parts or foams. Moreover, the operation is independent of the fluid electrical conductivity.

To ensure utmost safety, the electrical components are separated from the tank and perfectly sealed by means of ultrasound welding.



STANDAARD MACHINE ELEMENTS WORLDWIDE

ELESA models all rights reserved in accordance with the law. Always mention the source when reproducing our drawings.