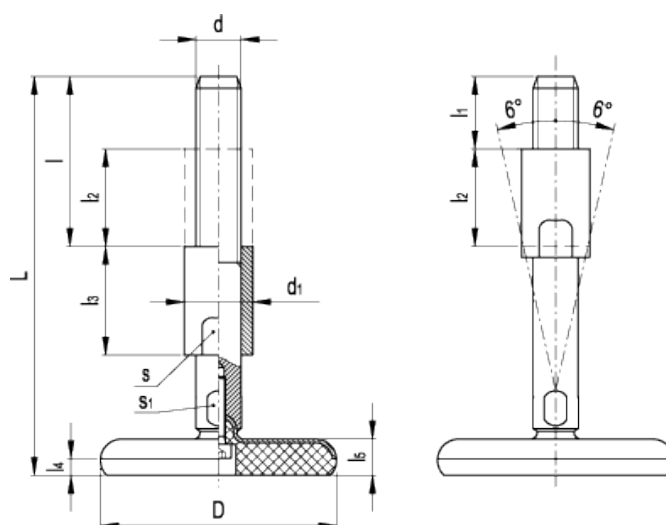


LMRS.

Levelling elements



american unit
metric unit

Elesa Standards		Main dimensions									Threaded stem		Wrench		Max limit static load	Weight
Code	Description	D	L	l	l ₁	l ₂	l ₃	l ₄	l ₅	d ₁	d	s	s ₁	[lbf] [N]	lbs g	
409432	LMRS.60-SST-M16-125	2.36 60	4.92 125	1.77 45	0.51 13	1.26 32	1.77 45	0.16 4	0.63 16	0.94 24	- M16	0.79 20	0.47 12	6048 27000	0.773 351	
409434	LMRS.60-SST-M16-150	2.36 60	5.91 150	1.77 45	0.51 13	1.26 32	1.77 45	0.16 4	0.63 16	0.94 24	- M16	0.79 20	0.47 12	6048 27000	0.861 391	
409436	LMRS.60-SST-M16-175	2.36 60	6.89 175	1.77 45	0.51 13	1.26 32	1.77 45	0.16 4	0.63 16	0.94 24	- M16	0.79 20	0.47 12	6048 27000	0.949 431	
409438	LMRS.60-SST-M16-200	2.36 60	7.87 200	1.77 45	0.51 13	1.26 32	1.77 45	0.16 4	0.63 16	0.94 24	- M16	0.79 20	0.47 12	6048 27000	1.037 471	
409532	LMRS.80-SST-M16-128	3.15 80	5.04 128	1.77 45	0.51 13	1.26 32	1.77 45	0.2 5	0.71 18	0.94 24	- M16	0.79 20	0.47 12	5376 24000	1.013 460	
409534	LMRS.80-SST-M16-153	3.15 80	6.02 153	1.77 45	0.51 13	1.26 32	1.77 45	0.2 5	0.71 18	0.94 24	- M16	0.79 20	0.47 12	5376 24000	1.101 500	
409536	LMRS.80-SST-M16-178	3.15 80	7.01 178	1.77 45	0.51 13	1.26 32	1.77 45	0.2 5	0.71 18	0.94 24	- M16	0.79 20	0.47 12	5376 24000	1.189 540	
409538	LMRS.80-SST-M16-203	3.15 80	7.99 203	1.77 45	0.51 13	1.26 32	1.77 45	0.2 5	0.71 18	0.94 24	- M16	0.79 20	0.47 12	5376 24000	1.278 580	

Elesa Standards		Main dimensions										Threaded stem		Wrench		Max limit static load	Weight
Code	Description	D	L	l	l ₁	l ₂	l ₃	l ₄	l ₅	d ₁	d	s	s ₁	[lbf] [N]	lbs g		
409552	LMRS.80-SST-M20-152	3.15 80	5.98 152	2.2 56	0.63 16	1.57 40	2.2 56	0.2 5	0.71 18	1.18 30	- M20	0.94 24	0.63 16	5376 24000	1.489 676		
409554	LMRS.80-SST-M20-177	3.15 80	6.97 177	2.2 56	0.63 16	1.57 40	2.2 56	0.2 5	0.71 18	1.18 30	- M20	0.94 24	0.63 16	5376 24000	1.626 738		
409556	LMRS.80-SST-M20-202	3.15 80	7.95 202	2.2 56	0.63 16	1.57 40	2.2 56	0.2 5	0.71 18	1.18 30	- M20	0.94 24	0.63 16	5376 24000	1.762 800		
409558	LMRS.80-SST-M20-252	3.15 80	9.92 252	2.2 56	0.63 16	1.57 40	2.2 56	0.2 5	0.71 18	1.18 30	- M20	0.94 24	0.63 16	5376 24000	2.035 924		
409572	LMRS.80-SST-M24-176	3.15 80	6.93 176	2.64 67	0.75 19	1.89 48	2.64 67	0.2 5	0.71 18	1.38 35	- M24	1.18 30	0.79 20	5376 24000	2.161 981		
409574	LMRS.80-SST-M24-226	3.15 80	8.9 226	2.64 67	0.75 19	1.89 48	2.64 67	0.2 5	0.71 18	1.38 35	- M24	1.18 30	0.79 20	5376 24000	2.555 1160		
409576	LMRS.80-SST-M24-276	3.15 80	10.87 276	2.64 67	0.75 19	1.89 48	2.64 67	0.2 5	0.71 18	1.38 35	- M24	1.18 30	0.79 20	5376 24000	2.949 1339		
409632	LMRS.100-SST-M16-130	3.94 100	5.12 130	1.77 45	0.51 13	1.26 32	1.77 45	0.24 6	0.79 20	0.94 24	- M16	0.79 20	0.47 12	4704 21000	1.302 591		
409634	LMRS.100-SST-M16-155	3.94 100	6.1 155	1.77 45	0.51 13	1.26 32	1.77 45	0.24 6	0.79 20	0.94 24	- M16	0.79 20	0.47 12	4704 21000	1.39 631		
409636	LMRS.100-SST-M16-180	3.94 100	7.09 180	1.77 45	0.51 13	1.26 32	1.77 45	0.24 6	0.79 20	0.94 24	- M16	0.79 20	0.47 12	4704 21000	1.478 671		
409638	LMRS.100-SST-M16-205	3.94 100	8.07 205	1.77 45	0.51 13	1.26 32	1.77 45	0.24 6	0.79 20	0.94 24	- M16	0.79 20	0.47 12	4704 21000	1.566 711		
409652	LMRS.100-SST-M20-155	3.94 100	6.1 155	2.2 56	0.63 16	1.57 40	2.2 56	0.24 6	0.79 20	1.18 30	- M20	0.94 24	0.63 16	4704 21000	1.778 807		
409654	LMRS.100-SST-M20-180	3.94 100	7.09 180	2.2 56	0.63 16	1.57 40	2.2 56	0.24 6	0.79 20	1.18 30	- M20	0.94 24	0.63 16	4704 21000	1.914 869		
409656	LMRS.100-SST-M20-205	3.94 100	8.07 205	2.2 56	0.63 16	1.57 40	2.2 56	0.24 6	0.79 20	1.18 30	- M20	0.94 24	0.63 16	4704 21000	2.051 931		
409658	LMRS.100-SST-M20-255	3.94 100	10.04 255	2.2 56	0.63 16	1.57 40	2.2 56	0.24 6	0.79 20	1.18 30	- M20	0.94 24	0.63 16	4704 21000	2.324 1055		
409672	LMRS.100-SST-M24-179	3.94 100	7.05 179	2.64 67	0.75 19	1.89 48	2.64 67	0.24 6	0.79 20	1.38 35	- M24	1.18 30	0.79 20	4704 21000	2.449 1112		
409674	LMRS.100-SST-M24-229	3.94 100	9.02 229	2.64 67	0.75 19	1.89 48	2.64 67	0.24 6	0.79 20	1.38 35	- M24	1.18 30	0.79 20	4704 21000	2.711 1231		
409676	LMRS.100-SST-M24-279	3.94 100	10.98 279	2.64 67	0.75 19	1.89 48	2.64 67	0.24 6	0.79 20	1.38 35	- M24	1.18 30	0.79 20	4704 21000	3.238 1470		

Base

AISI 304 stainless steel, sandblasted matte finish.

Threaded stem and adjustable sleeve

AISI 303 stainless steel, sandblasted matte finish, supplied assembled.

Glued assembly screw in stainless steel.

No-slip disk

NBR synthetic rubber (PERBUNAN), vulcanised to the base, hardness from 85 to 90 Shore A, black colour.

Features and applications

- The convex shape of the bolt head reduces the deposit of dirt and simplifies the cleaning operations.
- The adjustable sleeve covers the threading of the stem and it reduces the deposit of dirt.
- The NBR rubber no-slip disk is firmly bonded to the base by means of a vulcanisation process and a glued metal screw, which makes the two parts integral and prevents any solid or liquid substances from infiltrating into the base.
- Stainless steel, thanks to its high resistance to corrosion, allow the applications of these levelling elements on machines and equipment in those sectors where laws or particular hygienic, climatic and environmental factors make it mandatory to use corrosion resistant materials.

Technical data

The load values reported in the table are the result of a series of tests where a vertical load is applied to the stem and distributed on the horizontal plane of the base. If the values are exceeded a deformation of the base can occur first on the metal sheet and eventually on the no slip-disk plastic material.