

HFTX.

Oil level indicators

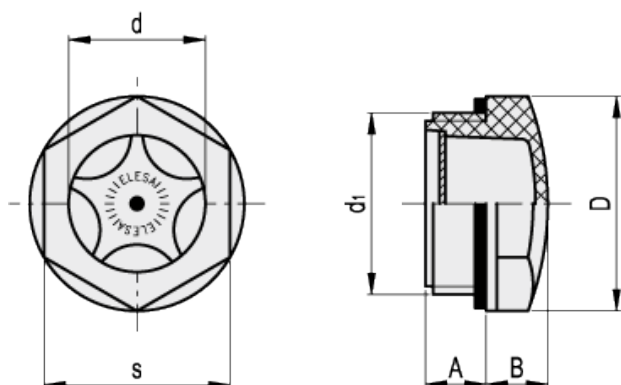


ELESA Original design



HFTX/metric/BSP

american unit
metric unit



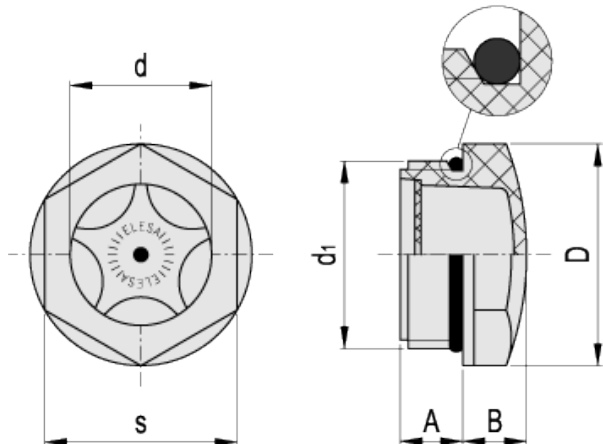
Elesa Standards		Main dimensions						Tightening torque	Weight
Code	Description	d ₁	A	B	D	d	s	[ft·lb] [Nm]	lbs g
13661	HFTX.11-M16x1.5	- M16x1.5	0.31 8	0.28 7	0.87 22	0.43 11	0.75 19	1÷2 2÷3	0.009 4
13681	HFTX.14-M20x1.5	- M20x1.5	0.37 9.5	0.31 8	1.02 26	0.55 14	0.87 22	6÷7 8÷10	0.011 5
13701	HFTX.18-M25x1.5	- M25x1.5	0.31 8	0.35 9	1.24 31.5	0.71 18	1.06 27	6÷7 8÷10	0.018 8
13726	HFTX.21-M26x1.5	- M26x1.5	0.51 13	0.35 9	1.24 31.5	0.71 18	1.06 27	6÷7 8÷10	0.018 8
13711	HFTX.19-M27x1.5	- M27x1.5	0.35 9	0.35 9	1.24 31.5	0.79 20	1.06 27	6÷7 8÷10	0.018 8
13731	HFTX.22-M30x1.5	- M30x1.5	0.35 9	0.39 10	1.38 35	0.87 22	1.18 30	6÷7 8÷10	0.022 10
13751	HFTX.26-M35x1.5	- M35x1.5	0.43 11	0.39 10	1.57 40	0.98 25	1.34 34	6÷7 8÷10	0.029 13
13771	HFTX.31-M40x1.5	- M40x1.5	0.45 11.5	0.51 13	1.87 47.5	1.18 30	1.59 40.5	6÷7 8÷10	0.044 20

american unit
metric unit

Elesa Standards		Main dimensions						Tightening torque	Weight
Code	Description	d ₁	A	B	D	d	s	[ft·lb] [Nm]	lbs g
13651	HFTX.9-1/4	- G 1/4	0.39 10	0.24 6	0.71 18	0.35 9	0.59 15	1+2 2+3	0.007 3
13671	HFTX.12-3/8	- G 3/8	0.3 7.5	0.28 7	0.87 22	0.43 11	0.75 19	2+4 3+5	0.009 4
13691	HFTX.15-1/2	- G 1/2	0.41 10.5	0.31 8	1.02 26	0.55 14	0.87 22	3+4 4+6	0.011 5
13721	HFTX.20-3/4	- G 3/4	0.41 10.5	0.35 9	1.24 31.5	0.79 20	1.06 27	4+6 6+8	0.018 8
13741	HFTX.24-1	- G 1	0.43 11	0.39 10	1.57 40	0.98 25	1.34 34	6+7 8+10	0.026 12
13761	HFTX.30-1¼	- G 1¼	0.45 11.5	0.51 13	1.87 47.5	1.18 30	1.59 40.5	6+7 8+10	0.044 20

HFTX/SAE

american unit
metric unit



Elesa Standards		Main dimensions						Weight
Code	Description	d ₁	A	B	D	d	s	lbs g
913691	HFTX.3/4-16 SAE	3/4-16 UNF -	0.59 15	0.31 8	1.02 26	0.51 13	0.87 22	0.011 5
913731	HFTX.1 1/16-12 SAE	1 1/16-12 UNF -	0.59 15	0.39 10	1.38 35	0.75 19	1.18 30	0.022 10

Material

Transparent polyamide based (PA-T) technopolymer. Resistant to solvents, oils with additives, greases, acids and alkali. Avoid contact with alcohol or detergents containing alcohol.

Star-shaped contrast screen

Matte anodised aluminium with red central level point.

Flat packing ring

NBR synthetic rubber.

Maximum continuous working temperature

230°F (110°C).

Accessories on request

Brass nut type [GH](#), for fitting to reservoirs with wall thickness smaller than 0.20 (5 mm).

Features

The particular shape of the magnifying lens increases and improves visibility even from side positions.

Technical data

The tightening torque indicated in the table guarantees an optimal tightness, keeping the packing ring in the correct position.

Note

For use with fluids containing special additives, please contact ELESA Sales Department.

