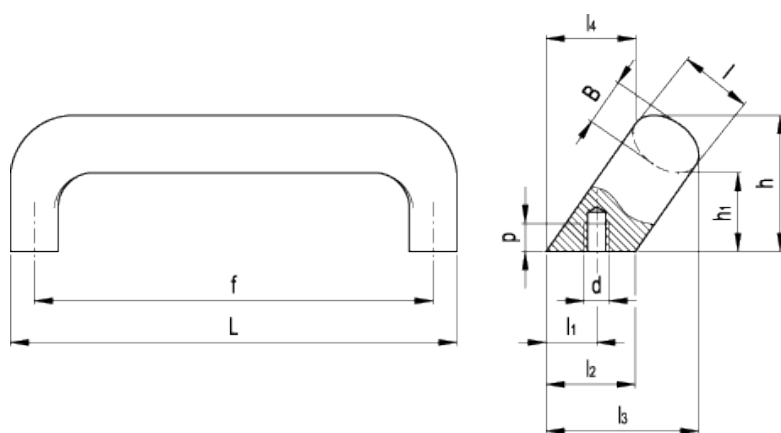


GN 565.2

Inclined handles



american unit
metric unit

Elesa-Gantergriff		Main dimensions										Mounting holes		Weight
Code	Description	L	f	h	h ₁	B	l	l ₁ +.039	l ₂	l ₃	l ₄	d	lbs g	p
GN.27301	GN 565.2-20-128-BL	5.55 141	5.04 128	1.89 48	1.26 32	0.51 13	0.79 20	0.53 13.5	0.94 24	1.97 50	1.26 32	- M6	0.242 110	0.39 10
GN.27302	GN 565.2-20-128-SW	5.55 141	5.04 128	1.89 48	1.26 32	0.51 13	0.79 20	0.53 13.5	0.94 24	1.97 50	1.26 32	- M6	0.247 112	0.39 10
GN.27305	GN 565.2-26-128-BL	5.71 145	5.04 128	2.13 54	1.34 34	0.67 17	1.02 26	0.71 18	1.26 32	2.24 57	1.34 34	- M8	0.419 190	0.47 12
GN.27306	GN 565.2-26-128-SW	5.71 145	5.04 128	2.13 54	1.34 34	0.67 17	1.02 26	0.71 18	1.26 32	2.24 57	1.34 34	- M8	0.423 192	0.47 12
GN.27311	GN 565.2-26-160-BL	6.97 177	6.3 160	2.13 54	1.34 34	0.67 17	1.02 26	0.71 18	1.26 32	2.24 57	1.34 34	- M8	0.489 222	0.47 12
GN.27312	GN 565.2-26-160-SW	6.97 177	6.3 160	2.13 54	1.34 34	0.67 17	1.02 26	0.71 18	1.26 32	2.24 57	1.34 34	- M8	0.496 225	0.47 12

Material

Aluminium. Oval cross section bar.

- Execution BL: natural aluminium.

- Execution SW: RAL 9005 black colour, matte finish, epoxy resin coating.

Assembly

Tapped blind holes.

Special executions on request (For sufficient quantities)

Different lengths and colours.



STANDARD MACHINE ELEMENTS WORLDWIDE

ELESA-GANTER models all rights reserved in accordance with the law. Always mention the source when reproducing our drawings.