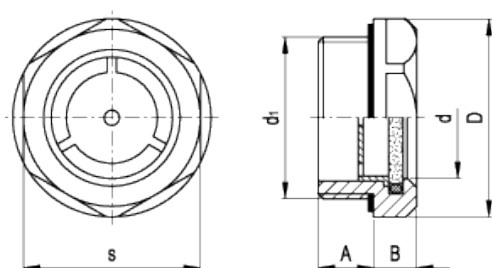


# GN 743

## Oil level indicators



american unit  
metric unit

Elesa-Gantergriff				Main dimensions						Weight
Code	Description	Code	Description	d <sub>1</sub>	A	B	D	d	s	lbs g
GN.37501	GN 743-11-M16x1.5-A	GN.37601	GN 743-11-M16x1.5-B	- M16x1.5	0.31 8	0.3 7.5	0.87 22	0.43 11	0.79 20	0.018 8
GN.37511	GN 743-14-M20x1.5-A	GN.37611	GN 743-14-M20x1.5-B	- M20x1.5	0.33 8.5	0.3 7.5	1.02 26	0.55 14	0.91 23	0.022 10
GN.37521	GN 743-18-M26x1.5-A	GN.37621	GN 743-18-M26x1.5-B	- M26x1.5	0.35 9	0.31 8	1.26 32	0.71 18	1.18 30	0.04 18
GN.37523	GN 743-18-M27x1.5-A	GN.37623	GN 743-18-M27x1.5-B	- M27x1.5	0.35 9	0.31 8	1.26 32	0.71 18	1.18 30	0.04 18
GN.37531	GN 743-24-M33x1.5-A	GN.37631	GN 743-24-M33x1.5-B	- M33x1.5	0.43 11	0.33 8.5	1.57 40	0.94 24	1.42 36	0.057 26
GN.37541	GN 743-32-M40x1.5-A	GN.37641	GN 743-32-M40x1.5-B	- M40x1.5	0.47 12	0.35 9	1.97 50	1.26 32	1.81 46	0.086 39
GN.37543	GN 743-32-M42x1.5-A	GN.37643	GN 743-32-M42x1.5-B	- M42x1.5	0.47 12	0.35 9	1.97 50	1.26 32	1.81 46	0.095 43
GN.37561	GN 743-11-G3/8-A	GN.37661	GN 743-11-G3/8-B	- G 3/8	0.31 8	0.3 7.5	0.87 22	0.43 11	0.79 20	0.02 9
GN.37563	GN 743-14-G1/2-A	GN.37663	GN 743-14-G1/2-B	- G 1/2	0.33 8.5	0.3 7.5	1.02 26	0.55 14	0.91 23	0.024 11
GN.37565	GN 743-18-G3/4-A	GN.37665	GN 743-18-G3/4-B	- G 3/4	0.35 9	0.31 8	1.26 32	0.71 18	1.18 30	0.04 18
GN.37567	GN 743-24-G1-A	GN.37667	GN 743-24-G1-B	- G 1	0.43 11	0.33 8.5	1.57 40	0.94 24	1.42 36	0.057 26
GN.37569	GN 743-32-G1¼-A	GN.37669	GN 743-32-G1¼-B	- G 1¼	0.47 12	0.35 9	1.97 50	1.26 32	1.81 46	0.093 42

- Execution A: with technopolymer contrast screen.
- Execution B: without contrast screen.

Window  
Natural glass.

Flat packing ring  
NBR synthetic rubber.

Maximum continuous working temperature  
210°F (100°C).

*Accessories on request*

Brass nut type [GH](#) for fitting to reservoirs with wall thickness smaller than 0.20" (5 mm).

*Features and applications*

GN 743 oil level indicators can be used on pressurised oil tanks (oil-proof resistance data available on request). The natural glass window is resistant to scratches.

The seal between the aluminium body and the glass window is guaranteed by a packing ring in NBR synthetic rubber.



STANDAARD MACHINE ELEMENTS WORLDWIDE