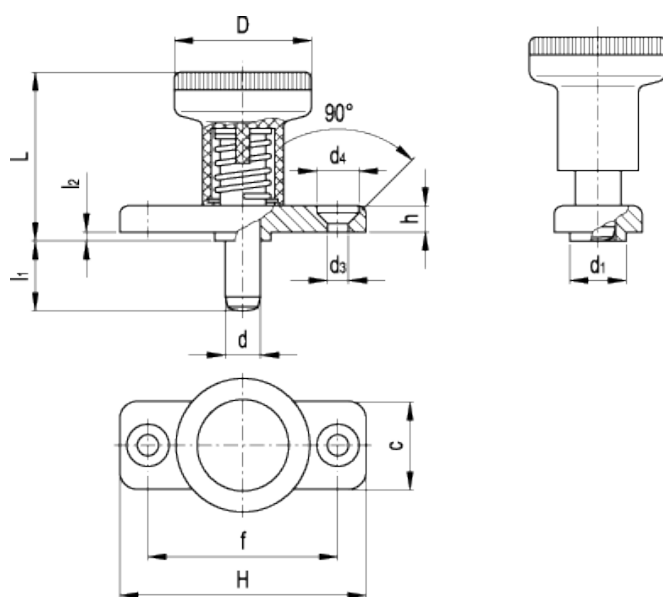


GN 608.1

Indexing plungers with flange and rest position



american unit
metric unit

Elesa-Gantergriff		Main dimensions											Spring pressure		Axial holding force [N]	Weight	
Code	Description	d ^{-0.0008 - .0015}	l ₁	H	c	d ₁ ^{-0.0008 - .0039}	D	d ₃	d ₄	f	L	l ₂ ^{-.006}	h	Preload [lbf] [N]		Max. load [lbf] [N]	lbs
GN.35091	GN 608.1-6-6	0.24 6	0.24 6	1.57 40	0.71 18	0.39 10	0.98 25	0.17 4.3	0.33 8.3	1.18 30	1.22 31	0.1 2.5	0.18 4.5	2 8.5	5 22	90 400	0.079 36
GN.35093	GN 608.1-6-14	0.24 6	0.55 6	1.57 40	0.71 18	0.39 10	0.98 25	0.17 4.3	0.33 8.3	1.18 30	1.22 31	0.1 2.5	0.18 4.5	2 8.5	5 22	90 400	0.093 42
GN.35092	GN 608.1-8-8	0.31 8	0.31 8	1.81 46	0.79 20	0.47 12	1.22 31	0.21 5.3	0.41 10.4	1.34 34	1.42 36	0.1 2.5	0.22 5.5	3 15.5	6 28	112 500	0.128 58
GN.35094	GN 608.1-8-18	0.31 8	0.71 8	1.81 46	0.79 20	0.47 12	1.22 31	0.21 5.3	0.41 10.4	1.34 34	1.42 36	0.1 2.5	0.22 5.5	3 15.5	6 28	112 500	0.145 66

Body with flange
Zinc-plated die-cast zinc alloy with two holes for assembly with countersunk head screws.

Plunger
Black-oxide steel with hardened end. Suggested matching hole in H7 tolerance.

"Push/Pull" knurled knob
High resilience polyamide based (PA) technopolymer, black colour, matte finish. Resistant to solvents, oils, greases and other chemical agents.

Applications

GN 608.1 indexing plungers with rest position have compact dimensions and are used on thin metal sheets and where the plunger needs to be locked in the retracted position.



STANDAARD MACHINE ELEMENTS WORLDWIDE

ELESA-GANTER models all rights reserved in accordance with the law. Always mention the source when reproducing our drawings.