

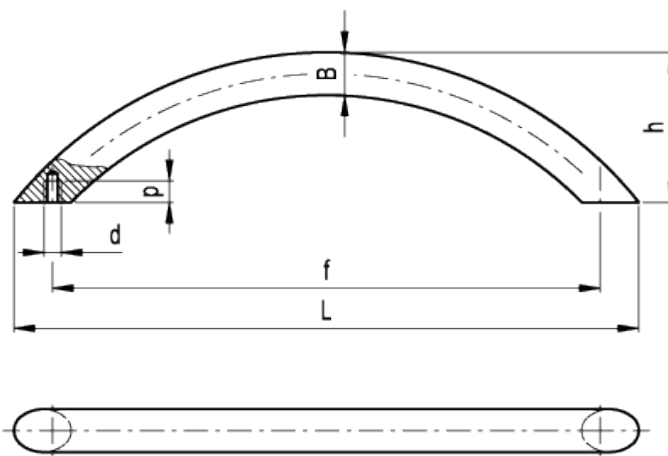
GN 424.5

Arch-shaped handles

elesa

METRIC

INOX
Stainless Steel



american unit
metric unit

Elesa-Gantergriff		Main dimensions				Mounting holes		Weight
Code	Description	L	f	h	B	d	p	lbs g
GN.26323	GN 424.5-10-64	2.95 75	± 0.01 64 $\pm 0,25$	1.38 35	0.39 10	- M4	0.2 5	0.121 55
GN.26325	GN 424.5-10-96	4.37 111	± 0.01 96 $\pm 0,25$	1.38 35	0.39 10	- M4	0.2 5	0.154 70
GN.26327	GN 424.5-10-128	5.75 146	± 0.01 128 $\pm 0,25$	1.38 35	0.39 10	- M4	0.2 5	0.198 90
GN.26329	GN 424.5-10-160	7.13 181	± 0.01 160 $\pm 0,25$	1.38 35	0.39 10	- M4	0.2 5	0.233 106
GN.26331	GN 424.5-10-192	8.62 219	± 0.01 192 $\pm 0,35$	1.38 35	0.39 10	- M4	0.2 5	0.286 130

Material

AISI 303 stainless steel. Round cross section bar, brushed matte finish.

Assembly

Tapped blind holes.

Features and applications

AISI 303 stainless steel, thanks to its high resistance to corrosion, allows the application of these handles on machines and equipment in those sectors where laws or particular hygienic, climatic and environmental factors make it mandatory to use corrosion resistant materials.

