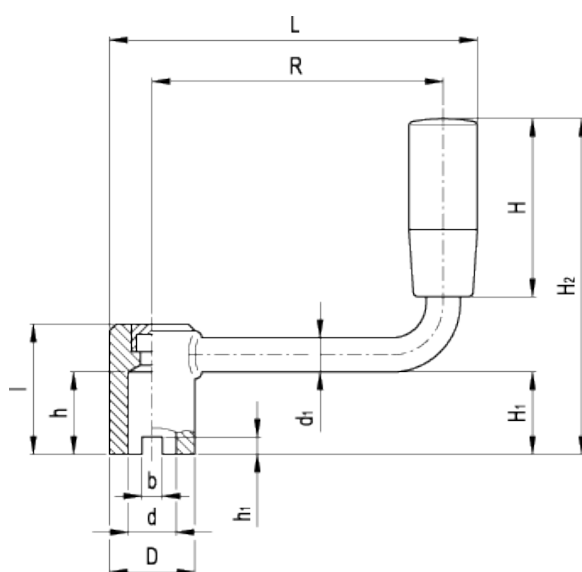


GN 369

Crank handles with revolving handle



american unit
metric unit

Elesa-Gantergriff		Main dimensions									Mounting hole		Handle		Weight
Code	Description	R	L	D	d ₁	l	b _{+0.0039}	h ₁	H ₁	H ₂	d _{H9}	h _{+0.0197}	H	∅	lbs g
GN.22101	GN 369-63-B10-N	2.48 63	3.19 81	0.71 18	0.31 8	1.1 28	0.18 4.5	0.16 4	0.71 18	2.91 74	0.394 10	0.71 18	1.57 40	0.71 18	0.192 87
GN.22111	GN 369-80-B10-N	3.15 80	3.86 98	0.71 18	0.31 8	1.1 28	0.18 4.5	0.16 4	0.71 18	2.91 74	0.394 10	0.71 18	1.57 40	0.71 18	0.205 93
GN.22121	GN 369-100-B12-N	3.94 100	4.72 120	0.79 20	0.31 8	1.18 30	0.18 4.5	0.16 4	0.79 20	3.46 88	0.472 12	0.79 20	1.97 50	0.83 21	0.267 121
GN.22131	GN 369-125-B12-N	4.92 125	5.71 145	0.79 20	0.31 8	1.18 30	0.18 4.5	0.16 4	0.79 20	3.46 88	0.472 12	0.79 20	1.97 50	0.83 21	0.289 131

Material

Sandblasted and nickel-plated steel with arm welded to the hub.

Assembly

Hub, H9 reamed hole with end grooving.

Hub cap

Technopolymer, black colour.

Revolving handle

Type [I.280](#) phenolic based (PF) Duroplast, black colour, glossy finish. Resistant to solvents, oils, greases and other chemical agents.

Special executions on request (For sufficient quantities)
Hub without end grooving.



STANDARD MACHINE ELEMENTS WORLDWIDE

ELESA-GANTER models all rights reserved in accordance with the law. Always mention the source when reproducing our drawings.