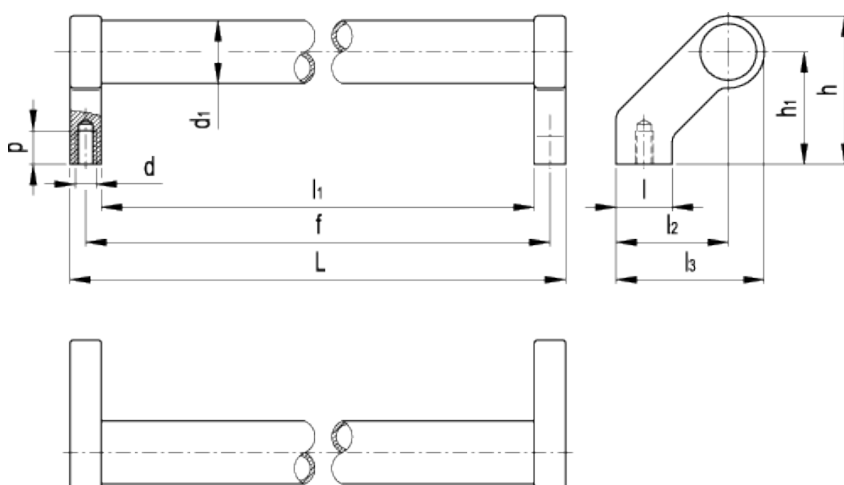


# GN 333

## Inclined tubular handles



american unit  
metric unit

Elesa-Gantergriff		Main dimensions										Mounting holes		Weight
Code	Description	L	f <sub>±0.020</sub>	h	h <sub>1</sub>	l	l <sub>1</sub>	l <sub>2</sub>	l <sub>3</sub>	d <sub>1</sub>	d	lbs	g	
GN.27662	GN 333-28-200-A-SW	8.43 28	7.87 200	2.6 M8	1.97 25	0.98 14	7.32 50	1.97 66	2.6 50	1.1 66	- 15	0.59 432		0.947 -
GN.27661	GN 333-28-200-A-EL	8.43 28	7.87 200	2.6 M8	1.97 25	0.98 14	7.32 50	1.97 66	2.6 50	1.1 66	- 15	0.59 430		0.947 -
GN.27666	GN 333-28-300-A-SW	12.36 28	11.81 300	2.6 M8	1.97 25	0.98 14	11.26 50	1.97 66	2.6 50	1.1 66	- 15	0.59 470		1.035 -
GN.27665	GN 333-28-300-A-EL	12.36 28	11.81 300	2.6 M8	1.97 25	0.98 14	11.26 50	1.97 66	2.6 50	1.1 66	- 15	0.59 470		1.035 -
GN.27672	GN 333-28-500-A-SW	20.24 28	19.69 500	2.6 M8	1.97 25	0.98 14	19.13 50	1.97 66	2.6 50	1.1 66	- 15	0.59 535		1.178 -
GN.27671	GN 333-28-500-A-EL	20.24 28	19.69 500	2.6 M8	1.97 25	0.98 14	19.13 50	1.97 66	2.6 50	1.1 66	- 15	0.59 535		1.178 -

### Tube

Aluminium.

- Execution EL: anodised, natural colour.

- Execution SW: RAL 9005 black colour, matte finish, epoxy resin coating.

### Handle shanks

Die-cast zinc alloy, RAL 9005 black colour, matte finish, epoxy resin coating, fitted to the tube by means of a screw.

### End caps

Polyamide based (PA) technopolymer, light grey colour. Resistant to solvents, oils, greases and other chemical agents.

Assembly  
Back mounting, tapped blind holes.

*Special executions on request (For sufficient quantities)*  
Different lengths.

*Features and applications*

GN 333 inclined tubular handles are characterised by a high stability thanks to the assembly of the handle shanks to the tube by means of two screws.

These handles are typically used on turning or rolling doors for machines and equipment.



---

STANDARD MACHINE ELEMENTS WORLDWIDE