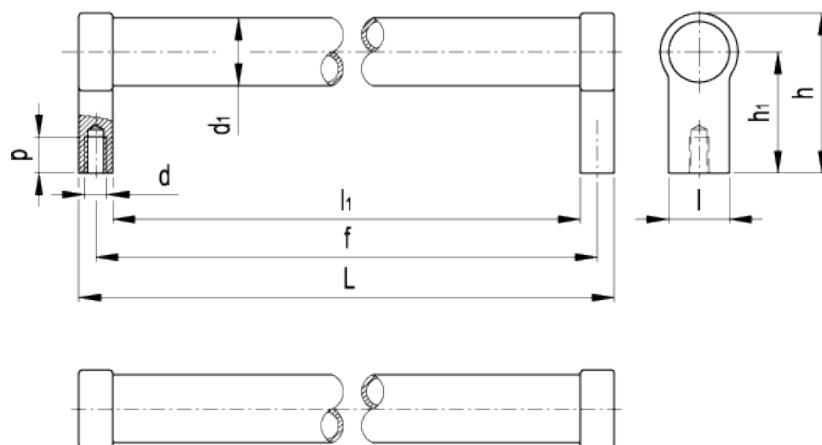


GN 333.5

Tubular handles



american unit
metric unit

Elesa-Gantergriff		Main dimensions							Mounting holes		Weight
Code	Description	d ₁	f ±0.039	l	d	h ₁	h	L	l ₁	p	lbs g
GN.27711	GN 333.5-28-200	1.1 28	7.87 200	0.98 25	- M8	1.97 50	2.6 66	8.43 214	7.32 186	0.59 15	1.101 500
GN.27713	GN 333.5-28-300	1.1 28	11.81 300	0.98 25	- M8	1.97 50	2.6 66	12.36 314	11.26 286	0.59 15	1.379 626
GN.27715	GN 333.5-28-500	1.1 28	19.69 500	0.98 25	- M8	1.97 50	2.6 66	20.24 514	19.13 486	0.59 15	1.74 790

Tube

AISI 304 stainless steel, thickness 0.079 (2 mm), fine grounded matte finish.

Handle shanks

Stainless steel (precision casting), matte sand-blasted and electropolished finish. Fitted to the tube by means of an O-ring.

Assembly

Tapped blind holes.

Special executions on request (For sufficient quantities)

Different lengths.

Features and applications

An O-ring at the connecting point between the tubular handle and the shanks, prevents any spray water from entering the tube. These handles are typically used on turning or rolling doors for machines and equipment.

Stainless steel, thanks to its high resistance to corrosion, allows the application of these handles on machines and equipment in those sectors where laws or particular hygienic, climatic and environmental factors make it mandatory to use corrosion resistant materials.

