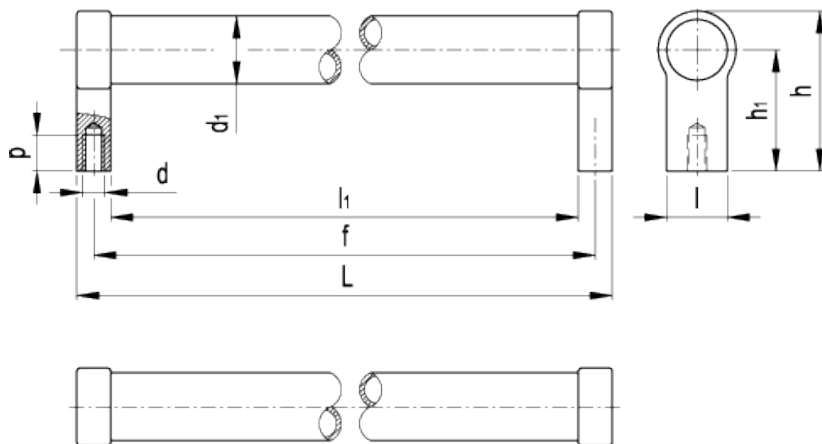


GN 333.1

Tubular handles



american unit
metric unit

Elesa-Gantergriff		Main dimensions							Mounting holes		Weight
Code	Description	L	f _{±.0079}	h	h ₁	l	l ₁	d ₁	d	p	lbs g
GN.27681	GN 333.1-28-200-A-EL	8.43 28	7.87 200	2.6 M8	1.97 M6	0.98 25	7.32 14	1.1 50	- 66	0.55 14	1.068 340
GN.27682	GN 333.1-28-200-A-SW	8.43 28	7.87 200	2.6 M8	1.97 M6	0.98 25	7.32 14	1.1 50	- 66	0.55 14	1.068 340
GN.27686	GN 333.1-28-300-A-EL	12.36 28	11.81 300	2.6 M8	1.97 M6	0.98 25	11.26 14	1.1 50	- 66	0.55 14	1.141 390
GN.27687	GN 333.1-28-300-B-EL	12.36 28	11.81 300	2.6 M8	1.97 M6	0.98 25	11.26 14	1.1 50	- 66	0.55 14	1.141 350
GN.27691	GN 333.1-28-500-A-EL	20.24 28	19.69 500	2.6 M8	1.97 M6	0.98 25	19.13 14	1.1 50	- 66	0.55 14	1.289 480
GN.27692	GN 333.1-28-500-A-SW	20.24 28	19.69 500	2.6 M8	1.97 M6	0.98 25	19.13 14	1.1 50	- 66	0.55 14	1.289 480

Tube

Aluminium.

- Execution EL: anodised, natural colour.

- Execution SW: RAL 9005 black colour, matte finish, epoxy resin coating.

Handle shanks

Die-cast zinc alloy, RAL 9005 black colour, matte finish, epoxy resin coating, fitted to the tube by means of a screw.

End caps

Polyamide based (PA) technopolymer, light grey colour. Resistant to solvents, oils, greases and other chemical agents.

Assembly

Tapped blind hole.

Special executions on request (For sufficient quantities)

Different lengths.

Features and applications

GN 333.1 tubular handles are characterised by a high stability thanks to the assembly of the handle shanks to the tube by means of two screws.

These handles are typically used on turning or rolling doors for machines and equipment.



STANDARD MACHINE ELEMENTS WORLDWIDE