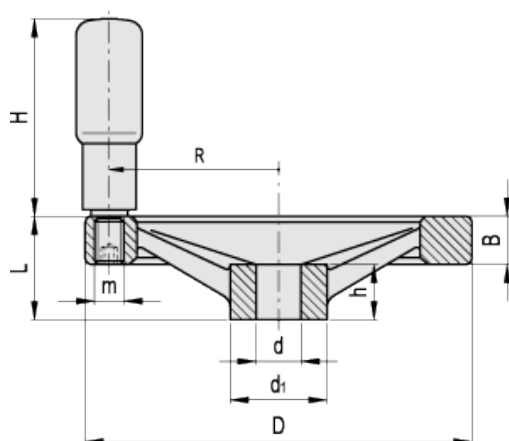


GN 322-R

Spoked handwheels with revolving handle



INCH



american unit
metric unit

Elesa-Gantergriff		Main dimensions				Bore		Handle				Weight
Code	Description	D	L	B	d ₁	d	h	H	Ø	m	R	lbs g
GN.926105	GN 322-125-B1/2-R	4.92 125	1.3 33	0.59 15	1.22 31	0.500 -	0.71 18	2.42 61.5	0.87 22	- M8	2.13 54	0.844 383
GN.926117	GN 322-140-B5/8-R	5.51 140	1.42 36	0.65 16.5	1.42 36	0.625 -	0.75 19	3.01 76.5	0.94 24	- M8	2.4 61	1.033 469
GN.926125	GN 322-160-B5/8-R	6.3 160	1.54 39	0.71 18	1.42 36	0.625 -	0.79 20	3.01 76.5	0.94 24	- M10	2.8 71	1.396 634
GN.926135	GN 322-200-B5/8-R	7.87 200	1.77 45	0.81 20.5	1.65 42	0.625 -	0.94 24	3.41 86.5	0.98 25	- M10	3.5 89	2.207 1002
GN.926145	GN 322-250-B3/4-R	9.84 250	2.01 51	0.91 23	1.89 48	0.750 -	1.1 28	3.41 86.5	0.98 25	- M10	4.45 113	3.542 1608

Material

Cast aluminium, fine sandblasted matte surface, turned and mirror-polished rim.

Standard execution

Standard reamed hole.

Revolving handle in polyamide based (PA) technopolymer, black colour, matte finish. Resistant to solvents, oils, greases and other chemical agents.

Special executions on request

- Handwheels with [GN_000.5](#) safety bushing.
- GN 324 handwheels with black epoxy resin coating, matte finish.
- Keyway in compliance with [ANSI B17.1-1967 tolerance.](#)

Other executions on request
Standard metric holes.

Technical data
Axial and radial runout lower than IT 12.



STANDARD MACHINE ELEMENTS WORLDWIDE

ELESA-GANTER models all rights reserved in accordance with the law. Always mention the source when reproducing our drawings.