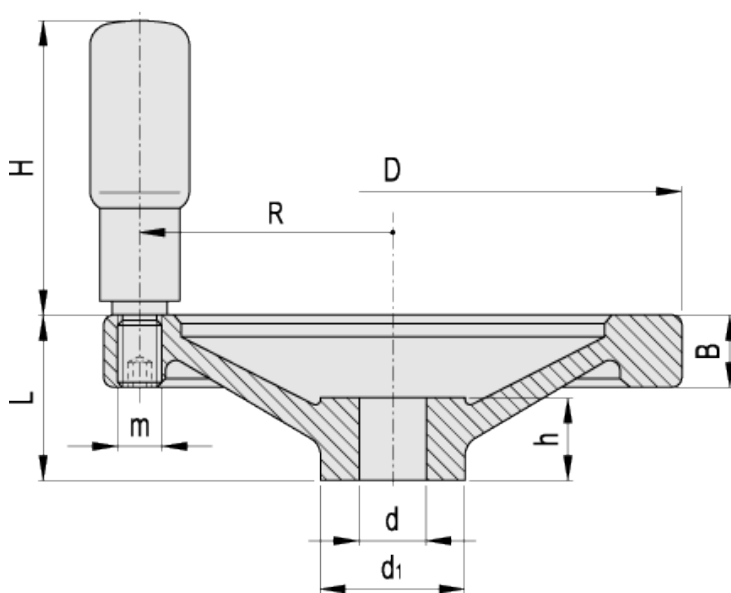


GN 321-R

Solid handwheels with revolving handle



INCH



american unit
metric unit

Elesa-Gantergriff		Main dimensions				Bore		Handle				Weight
Code	Description	D	L	B	d ₁	d	h	H	Ø	m	R	lbs g
GN.925505	GN 321-80-B3/8-R	3.15 80	1.02 26	0.51 13	1.02 26	0.375 -	0.63 16	1.73 44	0.63 16	- M6	1.32 33.5	0.355 161
GN.925525	GN 321-100-B3/8-R	3.94 100	1.18 30	0.55 14	1.1 28	0.375 -	0.67 17	2.3 58.5	0.71 18	- M6	1.67 42.5	0.562 255
GN.925545	GN 321-125-B1/2-R	4.92 125	1.3 33	0.59 15	1.22 31	0.500 -	0.71 18	2.42 61.5	0.87 22	- M8	2.13 54	0.868 394
GN.925575	GN 321-140-B5/8-R	5.51 140	1.42 36	0.65 16.5	1.42 36	0.625 -	0.75 19	3.01 76.5	0.94 24	- M8	2.4 61	1.108 503
GN.925595	GN 321-160-B5/8-R	6.3 160	1.54 39	0.71 18	1.42 36	0.625 -	0.79 20	3.01 76.5	0.94 24	- M10	2.8 71	1.465 665
GN.925605	GN 321-200-B5/8-R	7.87 200	1.77 45	0.81 20.5	1.77 45	0.625 -	0.94 24	3.41 86.5	0.98 25	- M10	3.5 89	2.192 995

Elesa-Gantergriff		Main dimensions				Bore		Handle				Weight
Code	Description	D	L	B	d ₁	d	h	H	Ø	m	R	lbs g
GN.925625	GN 321-250-B3/4-R	9.84 250	2.01 51	0.91 23	1.89 48	0.750 -	1.1 28	3.41 86.5	0.98 25	- M10	4.45 113	3.577 1624

Material

Cast aluminium, fine sandblasted matte surface, turned and mirror-polished rim.

Standard execution

Standard reamed hole.

Revolving handle in polyamide based (PA) technopolymer, black colour, matte finish. Resistant to solvents, oils, greases and other chemical agents.

Special executions on request

- Handwheels with [GN 000.5](#) safety bushing.
- GN 323 handwheels with black epoxy resin coating, matte finish.
- Handwheels with keyway in compliance with [ANSI B17.1-1967 tolerance](#).

Technical data

Axial and radial runout lower than IT 12.

Other executions on request

Standard metric holes.



STANDARD MACHINE ELEMENTS WORLDWIDE

ELESA-GANTER models all rights reserved in accordance with the law. Always mention the source when reproducing our drawings.