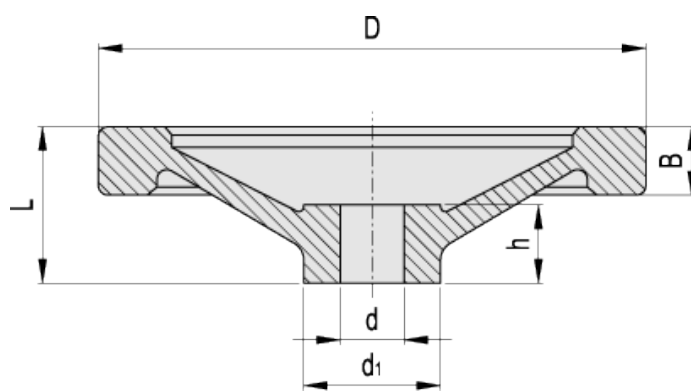


# GN 321-A

## Solid handwheels



INCH



american unit  
metric unit

Elesa-Gantergriff		Main dimensions				Bore		Weight
Code	Description	D	L	B	d <sub>1</sub>	d	h	lbs g
GN.925501	GN 321-80-B3/8-A	3.15 80	1.02 26	0.51 13	1.02 26	0.375 -	0.63 16	0.295 134
GN.925521	GN 321-100-B3/8-A	3.94 100	1.18 30	0.55 14	1.1 28	0.375 -	0.67 17	0.474 215
GN.925541	GN 321-125-B1/2-A	4.92 125	1.3 33	0.59 15	1.22 31	0.500 -	0.71 18	0.7 318
GN.925571	GN 321-140-B5/8-A	5.51 140	1.42 36	0.65 16.5	1.42 36	0.625 -	0.75 19	0.941 427
GN.925591	GN 321-160-B5/8-A	6.3 160	1.54 39	0.71 18	1.42 36	0.625 -	0.79 20	1.233 560
GN.925601	GN 321-200-B5/8-A	7.87 200	1.77 45	0.81 20.5	1.77 45	0.625 -	0.94 24	1.949 885
GN.925621	GN 321-250-B3/4-A	9.84 250	2.01 51	0.91 23	1.89 48	0.750 -	1.1 28	3.352 1522

### Material

Cast aluminium, fine sandblasted matte surface, turned and mirror-polished rim.

Standard execution  
Standard reamed hole.

### Special executions on request

- GN 321-A with [GN 000.5](#) safety bushing.
- GN 323 handwheels with black epoxy resin coating, matte finish.

- Handwheels with keyway in compliance with [ANSI B17.1-1967 tolerance](#).

*Technical Data*

Axial and radial runout lower than IT 12.

*Other executions on request*

Standard metric holes.



STANDARD MACHINE ELEMENTS WORLDWIDE

ELESA-GANTER models all rights reserved in accordance with the law. Always mention the source when reproducing our drawings.