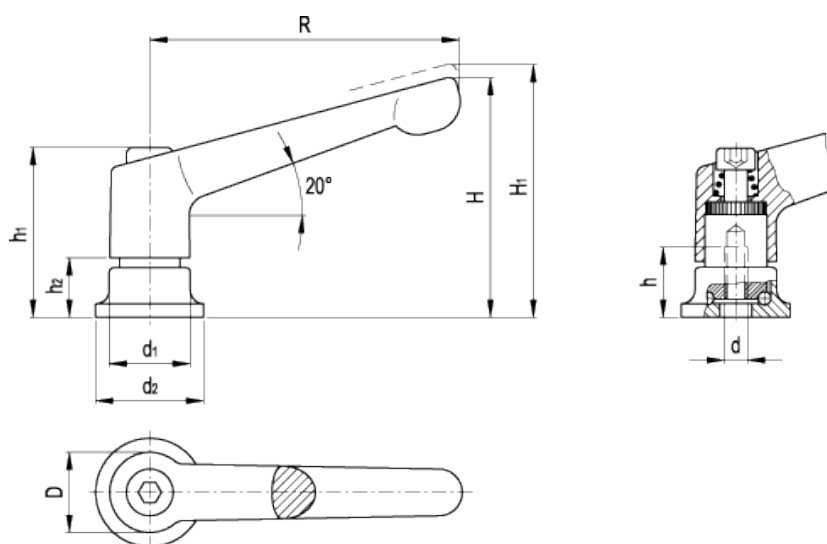


GN 300.4

Adjustable handles with high tightening clamping force



american unit
metric unit

Elesa-Gantergriff		Main dimensions							Mounting hole		Weight
Code	Description	R	D	H	H ₁	h ₁	h ₂	d ₂	d	h	lbs g
GN.15531	GN 300.4-63-M6-SW	2.48 63	0.69 17.5	1.91 48.5	2.07 52.5	1.36 34.5	0.43 11	0.94 24	- M6	0.49 12.5	0.211 96
GN.15551	GN 300.4-78-M8-SW	3.07 78	0.83 21	2.3 58.5	2.46 62.5	1.56 39.5	0.45 11.5	0.98 25	- M8	0.55 14	0.308 140
GN.15571	GN 300.4-92-M10-SW	3.62 92	0.94 24	2.7 68.5	2.85 72.5	1.83 46.5	0.53 13.5	1.18 30	- M10	0.71 18	0.452 205
GN.15591	GN 300.4-108-M12-SW	4.25 108	1.18 30	3.23 82	3.43 87	2.22 56.5	0.71 18	1.38 35	- M12	1.04 26.5	0.716 325

Lever body
Zinc alloy die-cast, epoxy resin coating.

Colour
RAL 9005 black matte finish.

Clamping element with distance bushing
 - Nitrided tempered steel with threaded hole and toothed element for coupling to the lever body.
 - Distance bushing nitrided tempered steel with balls.
 - Black-oxide steel retaining screw.
 - Treated steel return spring.

Special executions on request (For sufficient quantities)

- Lever in different colours.

Features and applications

GN 300.4 adjustable handles can withstand a double tightening clamp force thanks to a larger friction surface and to the thrust ball bearing which rotates freely thus reducing friction on the element. The reduced friction on the element and a greater pre-load avoid the deformation of the surface.

Instructions of use

For clamping, lift the lever to disengage the clamping device tooting and bring it back to start position. By releasing the lever, the return spring automatically engages the tooting.

If the lever cannot make a 360° rotation, the clamping element can be easily screwed by means of the hexagon socket front head screw (after having disengaged the lever).



STANDARD MACHINE ELEMENTS WORLDWIDE