

FRF + C

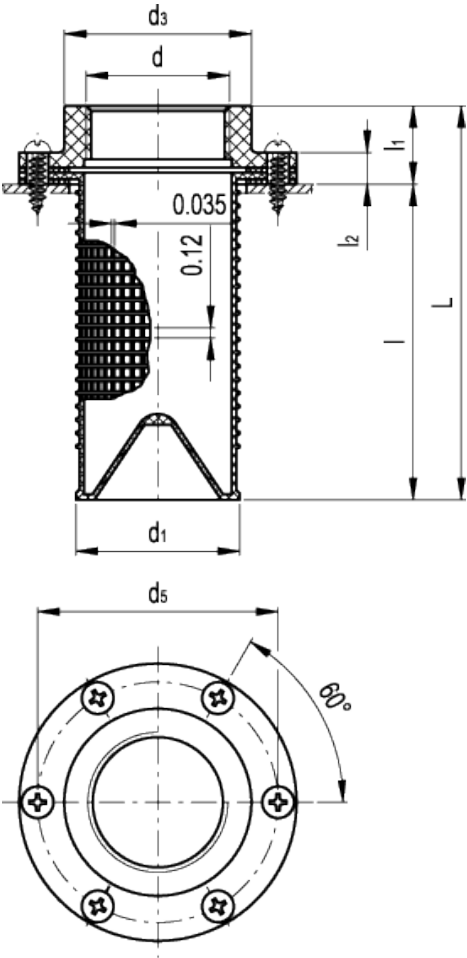
Threaded flange



ELESA Original design

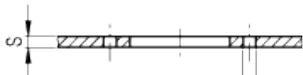


PA	PP	+190°F +30°F
BSP		

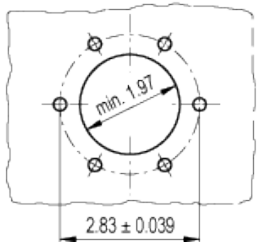


Drilling template

american unit
metric unit



- DIA= 0.161 $\begin{smallmatrix} +0.001 \\ -0.001 \end{smallmatrix}$ S ≤ 0.078
- DIA= 0.169 $\begin{smallmatrix} +0.001 \\ -0.001 \end{smallmatrix}$ 0.078 < S ≤ 0.157
- DIA= 0.173 $\begin{smallmatrix} +0.001 \\ -0.001 \end{smallmatrix}$ S > 0.157



Elesa Standards		Main dimensions									Weight
Code	Description	d	L	d ₁	d ₂	d ₃	d ₅	l	l ₁	l ₂	lbs g
9101	FRF+C	- G 1¼	4.65 118	1.93 49	3.27 83	2.2 56	2.83 72	3.72 94.5	0.93 23.5	0.35 9	0.231 105

Flange

Glass-fibre reinforced polyamide based (PA) technopolymer with threaded connector. Resistant to solvents, oils, greases and other chemical agents.

Basket

Polypropylene based (PP) technopolymer. Resistant to solvents, oils, greases and other chemical agents.

Colour

Black, matte finish.

Flat gaskets

Cork impregnated MGS based rubber.

Assembly

By means of six zinc-plated steel self-tapping screws TC-N10 (DIA. 4.8x19 mm) UNI 6951-DIN 7971, included in the supply.

Special executions on request (For sufficient quantities)

Threaded flange without basket (execution FRF).

Note

The breather cap to be coupled to the flange is not included.

Breather caps type [SFN](#), [SFP](#), [SFW](#) can be used depending on the customer's requirements.



STANDARD MACHINE ELEMENTS WORLDWIDE

ELESA models all rights reserved in accordance with the law. Always mention the source when reproducing our drawings.