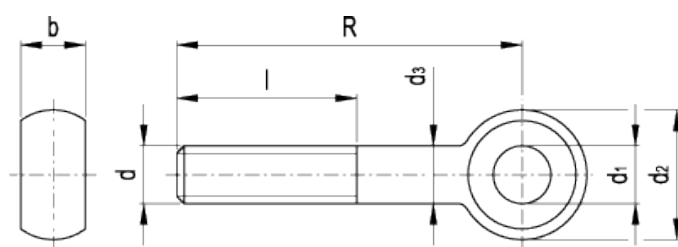


DIN 444

Eye screws



american unit
metric unit

Elesa-Gantergriff		Main dimensions						Hole	Weight
Code	Description	d	R	b _{-0.06}	d _{2-0.12}	d ₃	l	d _{1 H7}	lbs g
GN.12502	DIN 444-M6-50	- M6	1.97 50	0.28 7	0.55 14	0.24 6	1.26 32	0.236 6	0.031 14
GN.12504	DIN 444-M6-75	- M6	2.95 75	0.28 7	0.55 14	0.24 6	1.26 32	0.236 6	0.044 20
GN.12512	DIN 444-M8-50	- M8	1.97 50	0.35 9	0.71 18	0.31 8	1.26 32	0.315 8	0.057 26
GN.12514	DIN 444-M8-75	- M8	2.95 75	0.35 9	0.71 18	0.31 8	1.26 32	0.315 8	0.079 36
GN.12522	DIN 444-M10-50	- M10	1.97 50	0.47 12	0.79 20	0.39 10	1.57 40	0.394 10	0.084 38
GN.12524	DIN 444-M10-75	- M10	2.95 75	0.47 12	0.79 20	0.39 10	1.57 40	0.394 10	0.115 52
GN.12526	DIN 444-M10-100	- M10	3.94 100	0.47 12	0.79 20	0.39 10	1.57 40	0.394 10	0.15 68
GN.12532	DIN 444-M12-75	- M12	2.95 75	0.55 14	0.98 25	0.47 12	1.57 40	0.472 12	0.176 80
GN.12534	DIN 444-M12-100	- M12	3.94 100	0.55 14	0.98 25	0.47 12	1.57 40	0.472 12	0.216 98
GN.12536	DIN 444-M12-130	- M12	5.12 130	0.55 14	0.98 25	0.47 12	1.57 40	0.472 12	0.264 120
GN.12542	DIN 444-M16-75	- M16	2.95 75	0.67 17	1.26 32	0.63 16	1.97 50	0.63 16	0.322 146
GN.12544	DIN 444-M16-100	- M16	3.94 100	0.67 17	1.26 32	0.63 16	1.97 50	0.63 16	0.403 183
GN.12546	DIN 444-M16-130	- M16	5.12 130	0.67 17	1.26 32	0.63 16	1.97 50	0.63 16	0.485 220

Elesa-Gantergriff		Main dimensions						Hole	Weight
Code	Description	d	R	b _{-0.006}	d _{2 -0.012}	d ₃	l	d _{1 H7}	lbs g
GN.12552	DIN 444-M20-100	- M20	3.94 100	0.87 22	1.57 40	0.79 20	2.48 63	0.709 18	0.672 305
GN.12554	DIN 444-M20-130	- M20	5.12 130	0.87 22	1.57 40	0.79 20	2.48 63	0.709 18	0.806 366
GN.12556	DIN 444-M20-160	- M20	6.3 160	0.87 22	1.57 40	0.79 20	2.48 63	0.709 18	0.965 438

Material

Turned and black-oxide steel, class 5.8 (tensile strength 500 N/mm²).

Special executions on request (For sufficient quantities)

Different threadings and lengths.

Applications

DIN 444 eye screws are used mainly for assembly equipment and connections.



STANDARD MACHINE ELEMENTS WORLDWIDE

ELESA-GANTER models all rights reserved in accordance with the law. Always mention the source when reproducing our drawings.