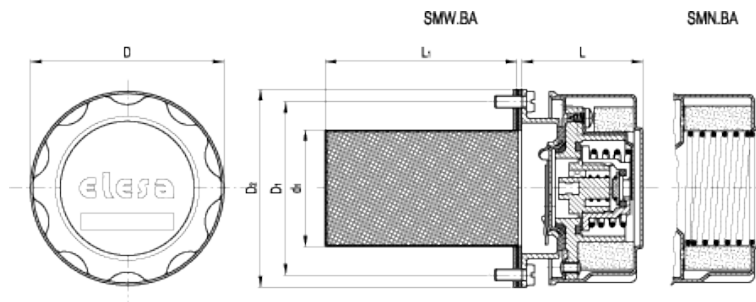


# SMN-BA SMW-BA



Breather caps and double-valve breather caps with bayonet assembly



american unit  
metric unit

| Elesa Standards |               | Main dimensions |            |                |                |                |                | Weight       |
|-----------------|---------------|-----------------|------------|----------------|----------------|----------------|----------------|--------------|
| Code            | Description   | D               | L          | L <sub>1</sub> | D <sub>1</sub> | D <sub>2</sub> | d <sub>1</sub> | lbs<br>g     |
| 156836          | SMN.46-BA-F40 | 1.85<br>47      | 1.65<br>42 | 2.6<br>66      | 1.57<br>40     | 2.05<br>52     | 1.06<br>27     | 0.2<br>91    |
| 156886          | SMN.80-BA-F40 | 3.19<br>81      | 2.17<br>55 | 3.15<br>80     | 2.83<br>72     | 3.27<br>83     | 1.93<br>49     | 0.815<br>370 |

american unit  
metric unit

| Elesa Standards |                     | Main dimensions |            |                |                |                |                | Weight       |
|-----------------|---------------------|-----------------|------------|----------------|----------------|----------------|----------------|--------------|
| Code            | Description         | D               | L          | L <sub>1</sub> | D <sub>1</sub> | D <sub>2</sub> | d <sub>1</sub> | lbs<br>g     |
| 156986          | SMW.80-BA-F40-350mb | 3.19<br>81      | 2.17<br>55 | 3.15<br>80     | 2.83<br>72     | 3.27<br>83     | 1.93<br>49     | 0.903<br>410 |

**Cover**  
Steel sheet, with chrome plating superficial treatment.

**Flange**  
Zinc-plated steel sheet.

**Double-valve (execution SMW.BA)**  
Technopolymer with NBR synthetic rubber O-ring, stainless steel springs, fitted to the valve body by means of a bracket and 2 self-tapping zinc-plated steel screws.  
Assembly to the flange by means of 4 aluminium rivets.  
Safety valve set at around 0.350 bar (0.700 bar on request).  
Suction valve set at around 0.030 bar.

**Bayonet and flange with bayonet**  
Zinc-plated steel sheet.

Safety chain  
Brass.

Washers

- Execution SMN.46-BA: two flat packing rings in rubber-impregnated cork and one in NBR synthetic rubber.
- Execution SMN.80-BA SMW.80-BA: three flat packing rings in rubber-impregnated cork.

Filtration basket

Zinc-plated steel, degree of filtration 800 μ.

Assembly

By means of six glossy zinc-plated steel with screwdriver slot head M5x12, supplied.

Ring shaped air filter

Tech-foam 40 μ.

Filter setting spring (only for SMN.BA)

Zinc-plated steel.

Maximum continuous working temperature

210°F (100°C).

Special executions on request (For sufficient quantities)

Dipstick for fluid level indication (only for SMW.BA).

Features and applications

SMN.BA and SMW.BA breather caps can be used on tanks containing oil fluids.

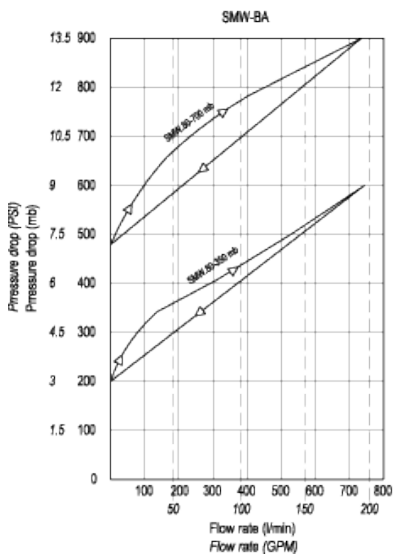
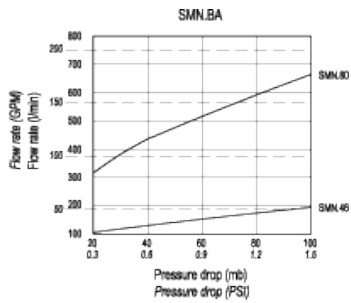
Double-valve breather caps SMW.BA with bayonet assembly creates a pressure plenum chamber right above the oil level within the limit conditions in order to avoid any reservoir deformation.

Advantages:

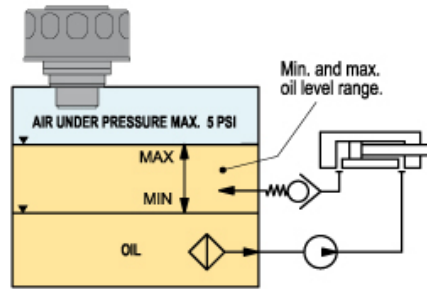
- it reduces reservoir air volume intake keeping clean fluid and filter;
- it improves suction pump action under working conditions reducing cavitation phenomenon;
- it prevents fluid leakage when the system is part of a mobile unit;
- it reduces foam in fluid.

Technical data

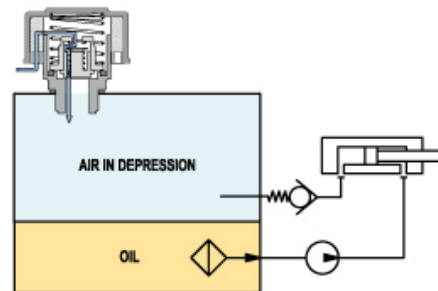
Air flow rate for the different executions of breather caps can be obtained from the diagram on the basis of the difference of air pressure inside and outside the reservoir. Tests carried out without filtration basket.



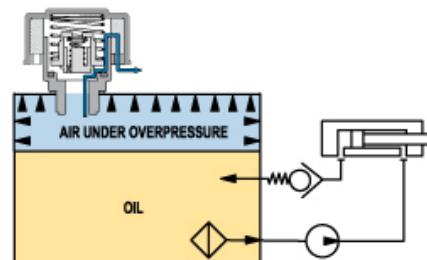
## SMW. pressurised breather cap functioning in a hydraulic circuit



Normal working conditions



When in the reservoir a depression under 0.45 PSI is produced, a flux of air entering the reservoir through the suction valve takes place.



When in the reservoir an over pressure exceeding 5 (or 10) PSI is produced, a flux of air is discharged through the safety valve.